



Regional Services • Community Focused

SGRC 101

An Introduction to Your Regional Commission

SGRC is YOUR Regional Commission

OCGA 50-8-32: "Regional Commissions shall function as the regional planning entity for land use, environmental, transportation, and historic preservations planning in each designated region of the state."

Our Mission

To develop, promote, and provide services that make the Southern Georgia region a better place to live and work.



SGRC Council Governance

- County Commission Chair
- Mayor of County Seat
- Private Sector Appointment
- Governor Appointments
- Lt. Governor Appointment
- Speaker Appointment



The Value of Your Regional Commission

- Professional staff and expertise
- Economies of scale
- Innovation and knowledge – shared across the region and state
- Representation at a regional level
- For state agencies: one-stop resource, consistent service delivery across a region, expertise to accomplish State Dept. goals

SGRC Departments/Services



- Local Government Services
- Community and Economic Development Support
- Small Business Lending
- Transportation and Environmental Planning
- Area Agency on Aging Programs
- Workforce Development Programs
- Geographic Information Systems Support

Area Agency on Aging

Area Agency on Aging (AAA)

Mission- To develop, provide, coordinate, and advocate for services that assist older individuals, at-risk adults, persons with disabilities, their families and caregivers

Vision- To assist these individuals in Living Longer, Living Safely, and Living Well



Area Agency on Aging (AAA)

Aging Funding

- Department of Human Services, Division of Aging Services
- Department of Community Health



Department of Human Services
STRONGER FAMILIES FOR A STRONGER GEORGIA

Aging Programs & Services

- Information & Assistance
- Community Options Counseling
- Nursing Home Transitions / Money Follows the Person
- Caregiver / Dementia Education Programs
- Material Aid
- Assistive Technology
- Elderly and Disabled Waiver Programs Intake
- Senior Farmers Market Nutrition Program
- Senior Hunger Coalition



**GEORGIA DEPARTMENT
OF COMMUNITY HEALTH**

Area Agency on Aging (AAA)

Aging Programs & Services (Continued)

- In-Home Services (Homemaker, Personal Care, Respite)
- Elderly Legal Assistance Program
- Wellness / Health Promotion Programs
- Alzheimer's Adult Day Care
- Home Modification (Wheelchair Ramps)
- Congregate / Senior Center Meals
- Home Delivered Meals



Aging and Disability Resource Connection

- “No Wrong Door” Toll Free Entry Point
- 1-888-73-AGING / 1-888-732-4464
- Marketing / Outreach



Area Agency on Aging (AAA)

Aging Advisory Council

Advocacy

- Georgia Council on Aging (CO-AGE)
- Georgia Association of Area Agencies on Aging (G4A)
- National Association of Area Agencies on Aging (n4a)



Area Plan Preparation

- Four year state plan with required goals



Contract Administration

- Reports and Monitoring for 30 AAA contracts with 26 organizations

Workforce Development

Workforce Development

Workforce Innovation & Opportunity Act of 2014

“WIOA is landmark legislation that is designed to strengthen and improve our nation's public workforce system and help get Americans, including youth and those with significant barriers to employment, into high-quality jobs and careers and help employers hire and retain skilled workers.”

- U.S. Department of Labor



Workforce Development

Mission

To establish a workforce system that provides data-driven and employer-validated talent solutions through the integration of education, workforce, and economic development resources across systems.



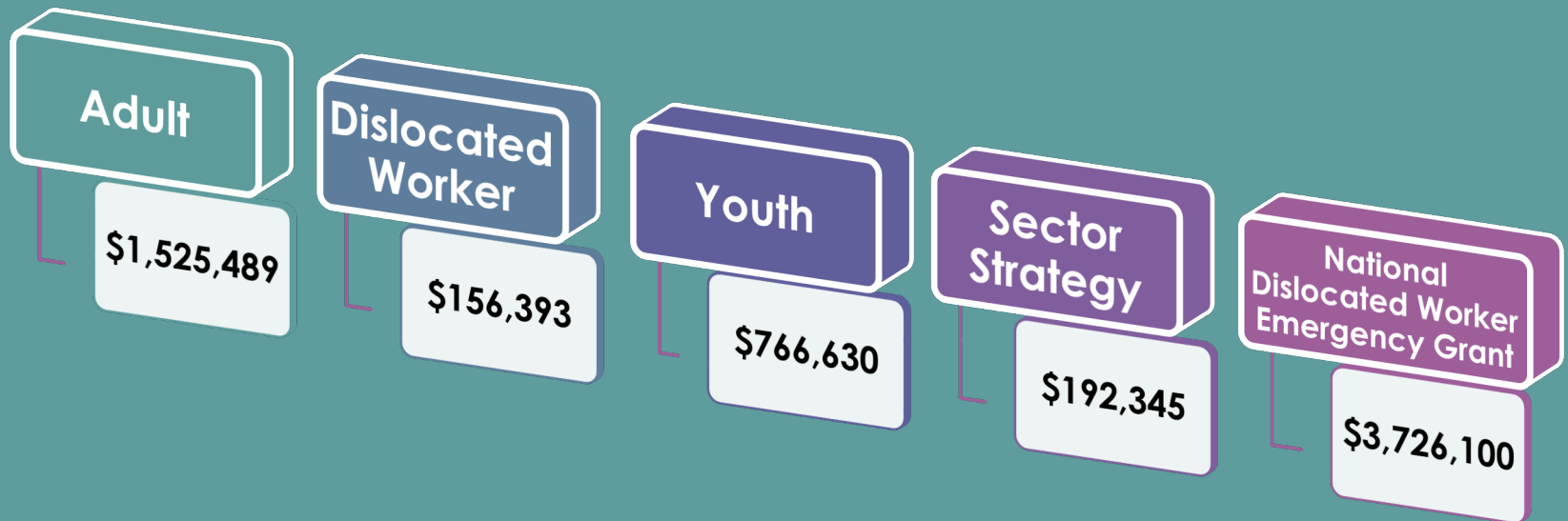
Workforce Development - Funding

Funds flow from USDOL to the Governor, who appoints the administrative entity (Technical College System of Georgia) to receive the funds and the State Workforce Development Board to administer/oversee the funds.

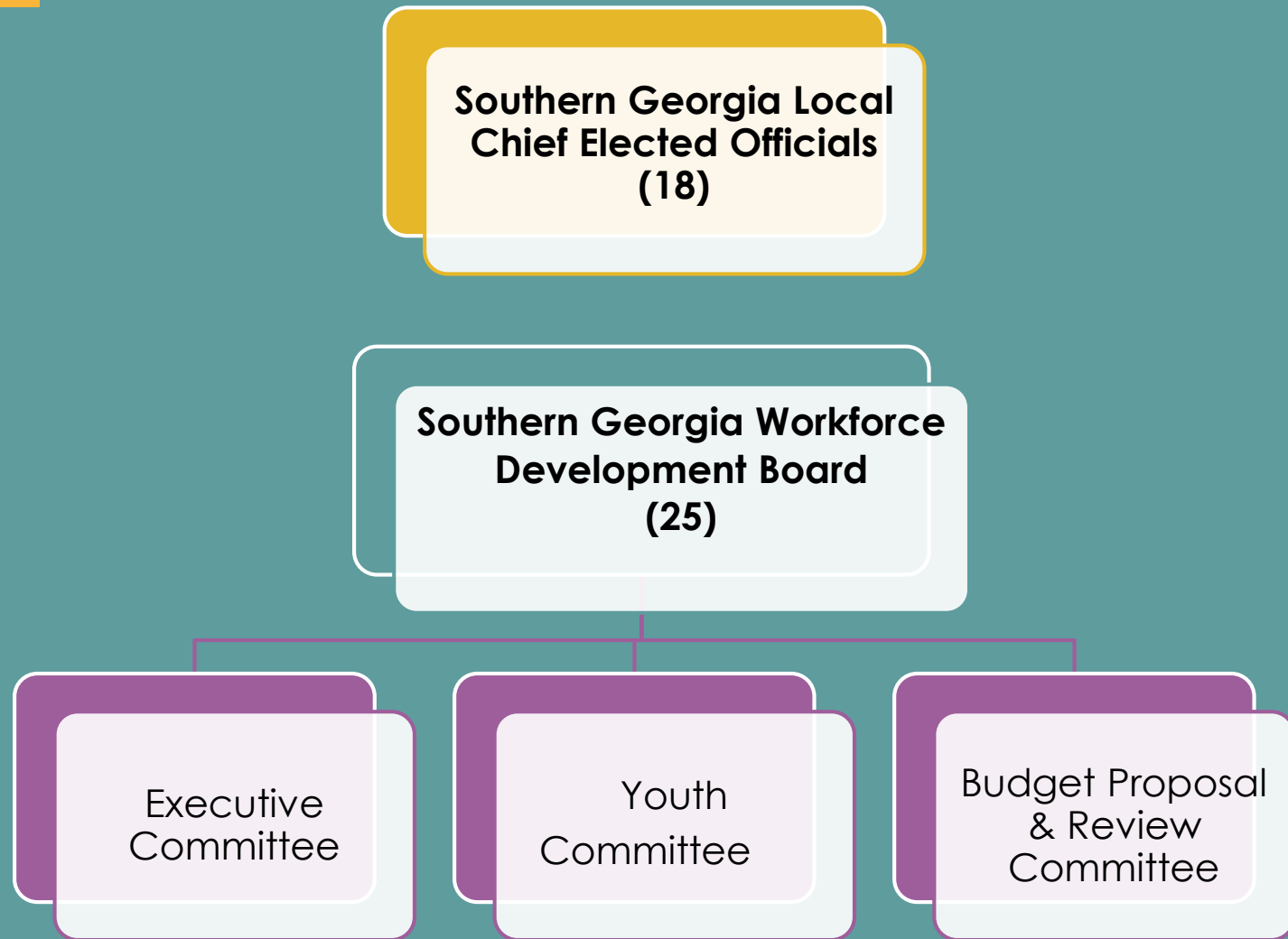


Workforce Development - Funding

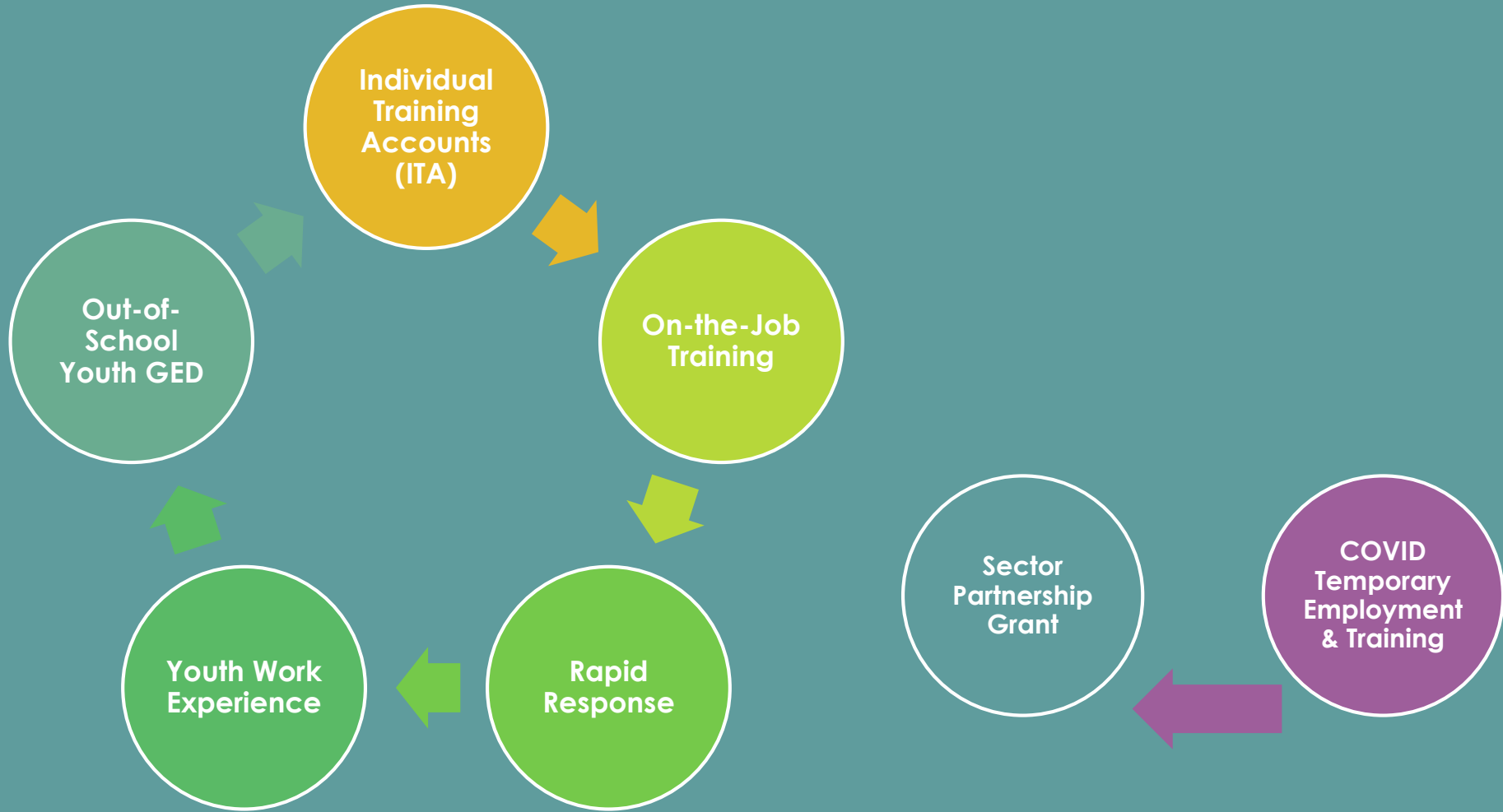
Program Year 2021 (July 1, 2021 – June 30, 2022)



Workforce Development - Structure



Workforce Development - Services



Workforce Development – ITA's

Individual Training Accounts (ITAs)

ITA's are the primary way for Georgia's Adults, Dislocated Workers and Youth to access WIOA funded occupational training.

- Demand Occupations
- Eligible Training Provider List (ETPL)
- Maximum \$6,000 per customer
- 2.5 year limit
- Supportive Service Payments
- Child Care Assistance
- Case Management/Career Counseling
- Job Search Assistance



Workforce Development – GED Services

GED Tutoring & Test Preparation

- Youth Based
- Supportive Service Payments
- Incentives
- GED Testing Fees
- Work Experience
- Case Management/Career Counseling
- Job Search Assistance



Workforce Development – OJT

On-the-Job Training (OJT)

On-the-Job Training **YOU HIRE, YOU TRAIN, WE PAY**



OJT Programs Let
You Hire for Attitude
While Training for
Skills



Reimbursement Rate is 50-75% of Employee's Wages

On-the-Job Training contracts are funded by the Southern Georgia Workforce Development Board (SGWDB). The SGWDB/SGRC will reimburse the employer 50-75% of the employee's wages during a set training period (a minimum of 4 weeks and a maximum of 8 weeks).

**OJT contract must be in place
before the new employee starts!**

Small Business Lending

Small Business Lending

A Public-Private Partnership financing small businesses by encouraging industrial and commercial business growth



Small Business Lending



SGRC Small Business Lending works in conjunction with the banking industry to provide “gap” financing to viable new or expanding small businesses.

The programs available include:

- US Economic Development Administration (EDA)
- US Department of Agriculture Rural Development (USDA RD)
- US Small Business Administration (SBA)

Small Business Lending

EDA Revolving Loan Fund (RLF)

Finance new or expanding small businesses in our 18 county region

- Create or Retain Jobs
- Cannot otherwise receive credit from private lender



Small Business Lending

USDA Lending Programs

IRP(Intermediary Relending Program)

RBEG (Rural Business Enterprise Grant)

- Low interest funds to assist businesses in rural areas
- Establish new business or expansion of existing business with job creation/retention

Small Business Administration Programs



SBA 504 Loan Program

SGRC Lending Dept is a Certified Development Company with SBA to do SBA 504 loans

- Fixed Asset Financing to create or retain jobs with three main benefits to the borrower
- Low Fixed interest rate, long repayment term, and low down payment

SBA 7(A) Loan Program

SGRC Lending Dept is Lender Service Provider (LSP)

- Provides financing for growth and development when conventional financing is not available
- Bank makes loan for varied uses of proceeds with a percentage guaranteed by SBA



Who Qualifies?

Qualified Business Candidates Must:

- Have a business net worth below \$15MM and net profit after taxes below \$5MM in last 2 years
- Have bank participation
- Be a For-Profit Business
- Create or Retain Jobs
- Have a minimum 10% Down Payment
- Be Owner Operated and Occupied (Not Speculative)



Eligible Businesses Can Be:

- Industrial, Retail, Service, or any Commercial Business operating as a Private Corporation, Sole Proprietorship, or Partnership

Small Business Lending Program Totals

PROJECT	SGRC AMOUNT	PRIVATE LEVERAGE	TOTAL LOAN	JOBS	NUMBER OF LOANS
SBA 504	\$53,146,352	\$97,398,150	\$150,544,502	3,074	180
SBA 7A's	\$36,650,727	\$11,034,072	\$47,684,798	1,600	115
EDA RLF	\$22,915,518	\$45,544,980	\$68,460,498	4,562	189
QUITMAN RLF	\$2,498,716	\$21,047,068	\$23,545,784	241	14
RURAL DEVELOPMENT	\$8,521,508	\$12,323,084	\$20,844,592	1,440	65
RD B&I	\$6,880,000	\$2,720,000	\$9,600,000	352	2
TOTAL	\$130,612,821	\$190,067,354	\$320,680,174	11,269	565

Community & Economic Development

Community & Economic Development

Mission

- *Promote regional community and economic development*
- *Identify funding to meet local governments' needs*
- *Facilitate private investment and jobs creation*
- *Enhance the standard of living for area residents*



Grant Partners & Programs

- Community Development Block Grant (CDBG)
 - Regular Round
 - EIP
 - RDF
 - ITAD
- OneGeorgia Equity Grant/Loan
- EDA Public Works Grant
- Transportation Alternatives Program (TAP), formally known as TE
- FEMA Assistance to Firefighters Grant (AFG)
- USDA Community Facilities Grant/Loan



Grants 101

- Determine the need – Is it a component of a local plan? (Comp, STWP, CEDS, etc.)
 - Look for funding to meet the need
 - Determine eligibility
- Who are the beneficiaries
 - Low to moderate income
 - New/Retained employees
 - General population
 - First responders
- Show me the money
 - Local government funds
 - Private investment
- Is the project competitive



CDBG Program

- CDBG funds are provided to the State of Georgia by the Department of Housing and Urban Development (HUD) and are regulated by federal statutes
- CDBG funds MUST benefit low to moderate income people

Funding Limits

- **Single-Activity: Up to \$1,000,000**
- **Multi-Activity: Up to \$1,250,000**

CDBG Program – Eligible Activities



- Street Paving & Drainage
- Water & Sewer
- Buildings
 - Senior Centers
 - Health Departments
 - Behavioral Health
 - Head Start
- Neighborhood Revitalization

No Grant \$\$ for Private-for-Profit

- There are grant funds available ONLY to units of local government to ASSIST private-for-profit with infrastructure (rail spurs, roads, sewer, water)
- Economic Development Programs are driven by two factors:
 - Job Creation/Retention
 - Capital Investment
- Two types of ED projects
 - Public Infrastructure Grant
 - Direct Loan to Company



CDBG-EIP Project

- **\$750,000 CDBG-EIP Grant** to Lowndes County for the construction of street paving and drainage improvements to allow Arglass Yamamura to build its first U.S. glass plant. This project resulted in the creation of over 150 new fulltime jobs, and a \$120 million private investment



Arglass Yamamura glass manufacturing facility.

CDBG-EIP Direct Loan Project

- **\$284,211 CDBG-EIP Direct Loan** funds to the City of Alma to assist Titan Modular Systems, Inc. in its purchase of land and building. This project resulted in the creation of 140+ jobs and \$900,000 in private investment
- Additional financing in this project included SBA 504 and 7a loans that were packaged and submitted by the SGRC Loan Division



Added Benefit of EIP Direct Loan



- Local governments may choose to recapture the principle and interest payments in order to either establish or recapitalize a local revolving loan fund (RLF) program
- The RLF funds can then be loaned to other expanding or new businesses that are in need of gap financing

OneGeorgia Projects

- **OneGeorgia Equity Grants for capacity building** to develop new or expand industrial parks through property acquisition and/or the construction of street, water, sewer, and/or rail system improvements
 - SE GA Regional Development Authority - \$500,000
 - Waycross & Ware County Development Authority - \$500,000
 - Bacon County Development Authority - \$500,000
 - Valdosta - Lowndes County Industrial Development Authority - \$300,000
 - Fitzgerald-Ben Hill County Development Authority - \$500,000
 - Douglas-Coffee County Industrial Authority - \$500,000
 - Berrien County Development Authority - \$499,744
 - Clinch County Development Authority - \$500,000



EDA Project

- **\$790,952 EDA Public Works Grant** to the City of Nashville for the construction of a natural gas line to assist Dupont Pine Products. This project resulted in the retention of 54 jobs, the creation of 45 jobs, and \$8 million in private investment



Local Government Services

Local Government Services

The Local Government Services Department assists local governments with planning, zoning, and many other related tasks.

Comprehensive Plans & Regional Plans

- 5-year Comprehensive Plan Updates & Amendments
- Addition of Broadband Element
- 5-year Regional Plan Updates
 - Regional Plan Annual Report
 - Next Regional Plan Due: July 1, 2023



Local Government Services

Zoning and Land Use Regulations

- Zoning Code Revisions
- Analysis and Staff Reports for Zoning Cases
- Subdivision Regulations

Developments of Regional Impact (DRI) Reviews

- Review of out-of-region DRI's
- Crafting DRI Reports within our Region



Local Government Services

Hazard Mitigation Plans

- Planning for Community Disaster Resiliency
 - Plan Amendments
 - Compliance with FEMA Requirements

Special Plans & Projects

- Urban Redevelopment Plans
- Enterprise/Opportunity Zones
- PlanFirst Applications
- Data Analysis and Research
- Service Delivery Strategies



Local Government Services Training & Workshops

Planning Commission Training

- Zoning Procedures Law
- The Roles of the:
 - Planning Commission
 - Zoning Board of Appeals
 - Elected Official



Model Ordinance Workshops

- Preservation of Historic Resources
- Manufactured Housing
- Solar Energy
- Tiny Houses/Cottage Housing Developments
- Cell Towers



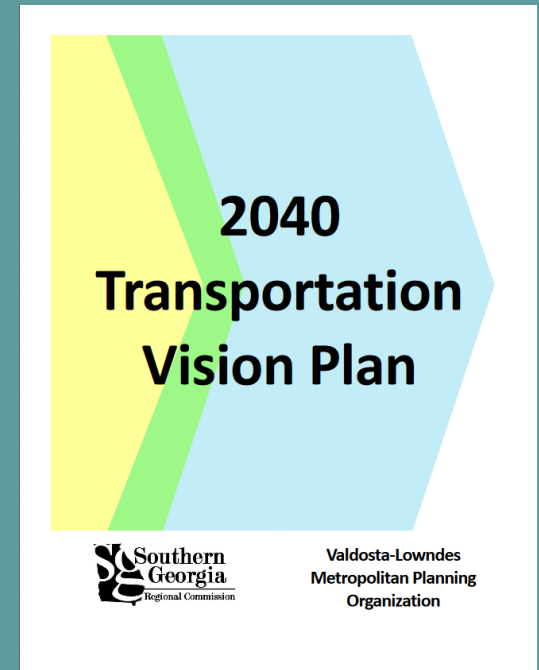
Transportation & Environmental

Transportation and Environmental

Multi-Modal Transportation Planning and Public Transit Services for Region

Metropolitan Planning Organization (MPO)

- SGRC is Designated as Planning Entity
 - Lowndes, Lanier, Brooks, and Berrien Counties
 - 2045 Metropolitan Transportation Plan
 - Develop Studies, Reports, and Analysis
 - Annual Crash Report
 - Valdosta Traffic Signal Timing Study
 - Complete Streets Suitability Report
 - Socioeconomic Data Studies
 - Bicycle and Pedestrian Master Plan
 - Urban Public Transit Studies
 - Freight Movement Studies



Transportation and Environmental

Regional and Rural Transit Planning

- Regional/County Transit Planning
 - Regional Transit Plan
 - County Transit Plans (Lanier/Clinch/Echols)



SGRC Regional Transit

- Funded by FTA 5311, DHS Human Services funds, Medicaid funds, other purchase of service revenue
- 40+ vehicles
- Operations contracted through MIDS Transportation, Inc.

Bicycle and Pedestrian Safety Planning

- **Local Community Plans**

- Tifton, Douglas (x2), Fitzgerald, Nashville, Dasher, Adel
- Model Bike/Pedestrian Ordinance
- Community Health Assessment
- Aging in Place Toolkit
- USBR 15 Route
- Complete Streets Best Practices and Trainings
- South Georgia Rails with Trails Report
- Bicycle and Pedestrian Crash Report



- **Safe Routes to School Crash Reports**

- **Regional Bicycle and Walking Maps (Various)**

Transportation and Environmental

Transportation Investment Act (TIA)

- Citizen Review Panel Meetings

Environmental Programs

- Improve Water Quality and Other Environmental Areas
- Regional Water Plan Seed Grant
 - Identify non-point source pollution sources
- Lake Beatrice Dam Improvements Feasibility Study



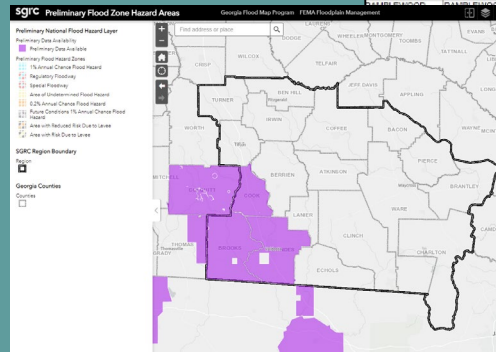
Geographic Information Systems

Geographic Information Systems

To develop & maintain GIS data & applications for governments across our region, state, & beyond.

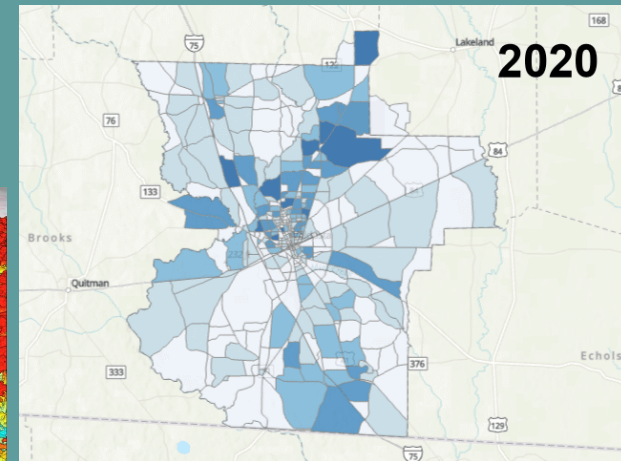
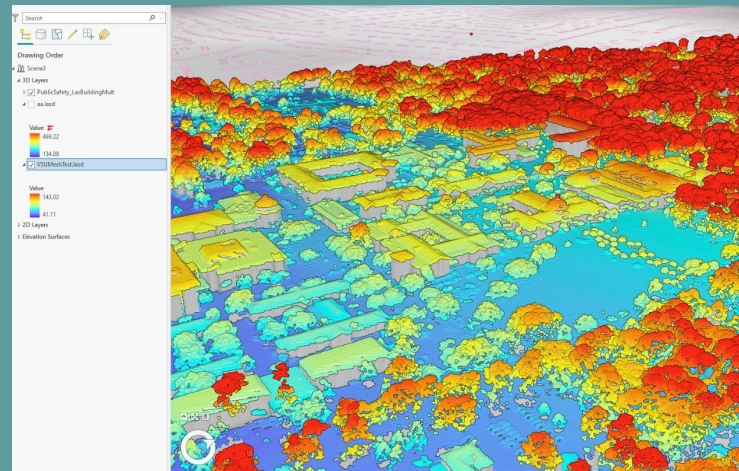
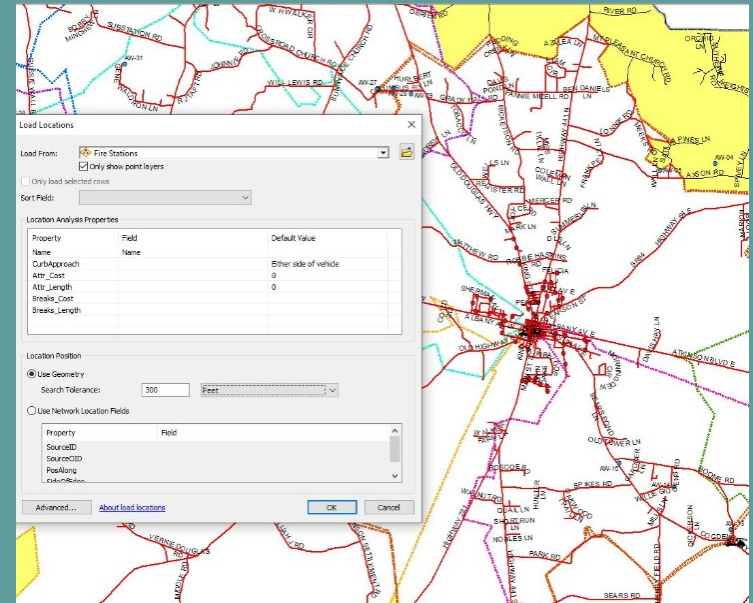
Data Construction & Maintenance

- Parcel Data
- Election Districts
- School Districts
- Zoning
- Cemeteries
- Flood Hazard Zones
- 911 Road Data
- Crimes
- Utilities



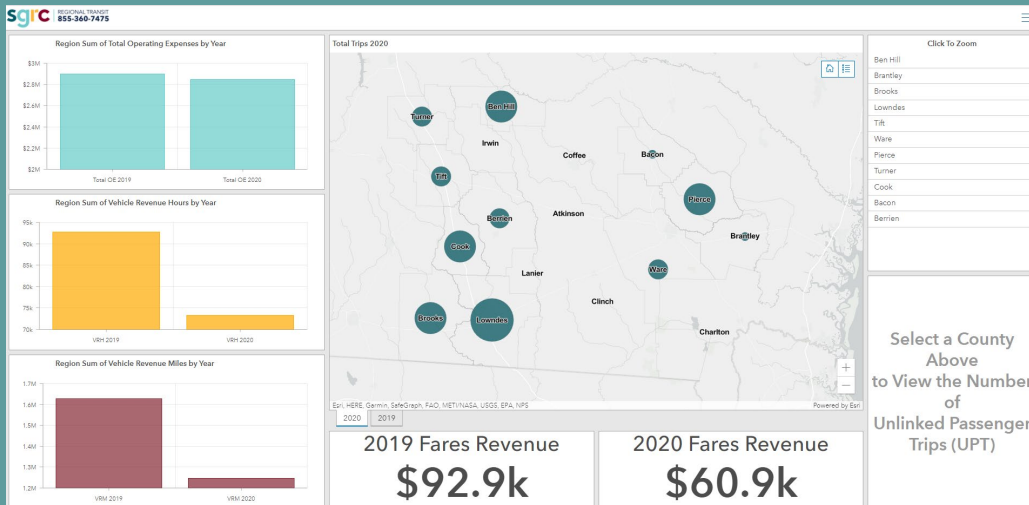
Spatial Analysis

- ISO Mapping & Assistance
- Disaster Assessments
- Crime Analysis
- Parcel Value Analysis
- EMS Drive Times
- Election & School Redistricting
- Emergency Management Applications



Mapping Solution Development

- Hard Copy Maps
- Digital Map Documents
- Mobile GIS Solutions
- Technical Support
- Web Based Data Creation & Mapping
- Low Cost GIS
- Drone Image Solutions



QUESTIONS