



Regional Services • Community Focused

# SGRC 101

An Introduction to Your Regional Commission

# SGRC is YOUR Regional Commission

*OCGA 50-8-32: “Regional Commissions shall function as the regional planning entity for land use, environmental, transportation, and historic preservations planning in each designated region of the state.”*

## Our Mission

To develop, promote, and provide services that make the Southern Georgia region a better place to live and work.

## Our Governance

- SGRC Council
  - County Commission Chair
  - County Seat Mayor
  - Private Sector Appointment
  - Appointments of Governor, Lt. Governor and Speaker



# SGRC is YOUR Regional Commission

## SGRC Delivers for You

- Local Government Services
- Community and Economic Development Support
- Small Business Lending
- Transportation and Environmental Planning
- Area Agency on Aging Programs
- Workforce Training Programs
- Geographic Information Systems Support
- Information Technology Support



## The Value of Your Regional Commission

- Professional staff and expertise
- Economies of scale
- Innovation and knowledge/tech transfer across the region and state
- Representation at a regional level
- For state agencies: one-stop resource, consistent service delivery across a region, expertise to accomplish State Dept. goals

# Local Government Services

The Local Government Services Department assists local governments with planning, zoning, and many other related tasks.

## Comprehensive Plans & Regional Plans

- 5-year Comprehensive Plan Updates & Amendments
- 5-year Regional Plan Updates
  - Regional Plan Annual Report

## Zoning and Land Use Regulations

- Zoning Code Revisions
- Analysis and Staff Reports for Zoning Cases
- Subdivision Regulations



# Local Government Services

## Hazard Mitigation Plans

- Planning for Community Disaster Resiliency
  - Plan Amendments
  - Compliance with FEMA Requirements

## Special Plans & Projects

- Urban Redevelopment Plans
- Enterprise/Opportunity Zones
- PlanFirst Applications
- Data Analysis and Research
- Service Delivery Strategies



# Training and Workshops

## Planning Commission Training

- Zoning Procedures Law
- The Roles of the:
  - Planning Commission
  - Zoning Board of Appeals
  - Elected Official



## Model Ordinance Workshops

- Preservation of Historic Resources
- Manufactured Housing
- Solar Energy
- Tiny Houses/Cottage Housing Developments
- Cell Towers



# Community & Economic Development

## Mission

- *Promote regional community and economic development*
- *Identify funding to meet local governments' needs*
- *Facilitate private investment and jobs creation*
- *Enhance the standard of living for area residents*





# Grant Partners & Programs

- Community Development Block Grant (CDBG)
  - Regular Round
  - EIP
  - RDF
  - ITAD
- OneGeorgia Equity Grant/Loan
- EDA Public Works Grant
- Transportation Alternatives Program (TAP), formally known as TE
- FEMA Assistance to Firefighters Grant (AFG)
- USDA Community Facilities Grant/Loan



# Grants 101

- Determine the need – Is it a component of a local plan (Comp, STWP, CEDS, etc.)
  - Look for funding to meet the need
  - Determine eligibility
- Who are the beneficiaries
  - Low to moderate income
  - New/Retained employees
  - General population
  - First responders
- Show me the money
  - Local government funds
  - Private investment
- Is the project competitive



# CDBG Program

- CDBG funds are provided to the State of Georgia by the Department of Housing and Urban Development (HUD) and are regulated by federal statutes
- CDBG funds MUST benefit low to moderate income people

## Funding Limits

•**Single-Activity: Up to \$750,000**

•**Multi-Activity: Up to \$1,000,000**

# CDBG Program – Eligible Activities



- Street Paving & Drainage
- Water & Sewer
- Buildings
  - Senior Centers
  - Health Departments
  - Behavioral Health
  - Head Start
- Neighborhood Revitalization

# No Grant \$\$ for Private-for-Profit

- There are grant funds available ONLY to units of local government to ASSIST private-for-profit with infrastructure (rail spurs, roads, sewer, water)
- Economic Development Programs are driven by two factors:
  - Job Creation/Retention
  - Capital Investment
- Two types of ED projects
  - Public Infrastructure Grant
  - Direct Loan to Company



# CDBG-EIP Project

- **\$750,000 CDBG-EIP Grant** to the City of Adel for the construction of water and sewer system improvements that will allow for the construction of a new Cook Medical Center. This project will result in the retention of 177 jobs, the creation of 51 new fulltime jobs, and \$47 million in private investment
- \$48.8 million total project cost
  - Additional funding
  - City of Adel





# CDBG-EIP Direct Loan Project

- **\$284,211 CDBG-EIP Direct Loan** funds to the City of Alma to assist Titan Modular Systems, Inc. in its purchase of land and building. This project resulted in the creation of 140+ jobs and \$900,000 in private investment
- Additional financing in this project included SBA 504 and 7a loans that were packaged and submitted by the SGRC Loan Division





# Added Benefit of EIP Direct Loan



- Local governments may choose to recapture the principle and interest payments in order to either establish or recapitalize a local revolving loan fund (RLF) program
- The RLF funds can then be loaned to other expanding or new businesses that are in need of gap financing

# OneGeorgia Projects

- **OneGeorgia Equity Grants for capacity building to construct street, water, and sewer system improvements in new industrial parks**
  - Waycross & Ware County Development Authority - \$500,000
  - Bacon County Development Authority - \$500,000
  - Valdosta - Lowndes County Industrial Development Authority - \$300,000
  - Fitzgerald-Ben Hill County Development Authority - \$500,000
  - Douglas-Coffee County Industrial Authority - \$500,000
  - Berrien County Development Authority - \$499,744
  - Clinch County Development Authority - \$500,000



# EDA Project

- **\$790,952 EDA Public Works Grant** to the City of Nashville for the construction of a natural gas line to assist Dupont Pine Products. This project will result in the retention of 54 jobs, the creation of 45 jobs, and \$8 million in private investment



# Small Business Lending

A Public-Private Partnership Financing Small Businesses by Encouraging Industrial and Commercial Business Growth



# Small Business Lending



SGRC Small Business Lending works in conjunction with the banking industry to provide “gap” financing to viable new or expanding small businesses.

The programs available include:

- US Economic Development Administration (EDA)
- US Department of Agriculture Rural Development (USDA RD)
- US Small Business Administration (SBA)

# Small Business Lending

## EDA Revolving Loan Fund (RLF)

- Finance New or Expanding Small Businesses in our 18 County Region
  - Create or Retain Jobs
  - Cannot otherwise receive credit from private lender



## USDA Lending Programs

- IRP(Intermediary Relending Program) and RBEG (Rural Business Enterprise Grant)
  - Low interest funds to assist businesses in rural areas
  - Establish new business or expansion of existing business with job creation/retention



# Small Business Administration Programs



## SBA 504 Loan Program

- SGRC Lending Dept is a Certified Development Company with SBA to do SBA 504 loans
  - Fixed Asset Financing to create or retain jobs with three main benefits to the borrower
  - Low Fixed interest rate, long repayment term, and low down payment



## SBA 7(A) Loan Program

- SGRC Lending Dept is Lender Service Provider (LSP)
  - Provides financing for growth and development when conventional financing is not available
  - Bank makes loan for varied uses of proceeds with a percentage guaranteed by SBA



# Who Qualifies?

## Who Qualifies for SGRC Small Business Lending Programs?

- Qualified Business Candidates Must:
  - Have a Business Net Worth Below \$15MM and Net Profit After Taxes Below \$5MM in last 2 years
  - Have Bank Participation
  - Be a For-Profit Business
  - Create or Retain Jobs
  - Have a minimum 10% Down Payment
  - Be Owner Operated and Occupied (Not Speculative)
- Eligible Businesses Can Be:
  - Industrial, Retail, Service, or Any Commercial Business Operating as a Private Corporation, Sole Proprietorship, or Partnership



# Small Business Lending Program Totals

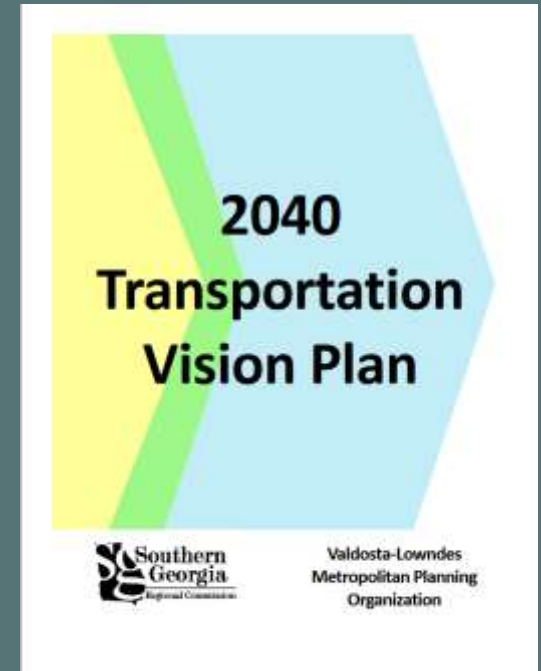
PROJECT	SGRC AMOUNT	PRIVATE LEVERAGE	TOTAL LOAN	JOBS	NUMBER OF LOANS
SBA 504	\$50,077,352	\$92,498,085	\$142,575,437	3,032	174
SBA 7A's	\$34,883,727	\$10,352,372	\$45,236,098	1,513	111
EDA RLF	\$21,789,768	\$44,729,799	\$66,519,567	4,446	184
QUITMAN RLF	\$2,498,716	\$21,047,068	\$23,545,784	241	14
RURAL DEVELOPMENT	\$8,313,258	\$11,985,403	\$20,298,661	1,438	65
RD B&I	\$6,880,000	\$2,720,000	\$9,600,000	352	2
<b>TOTAL</b>	<b>\$124,442,821</b>	<b>\$183,332,727</b>	<b>\$307,775,547</b>	<b>11,022</b>	<b>550</b>

# Transportation and Environment

## Multi-Modal Transportation Planning and Public Transit Coordination for Region

### Metropolitan Planning Organization (MPO)

- SGRC is Designated as Planning Entity
  - Lowndes, Lanier, Brooks, and Berrien Counties
  - 2045 Metropolitan Transportation Plan
  - Develop Studies, Reports, and Analysis
    - Annual Crash Report
    - Valdosta Traffic Signal Timing Study
    - Complete Streets Suitability Report
    - Socioeconomic Data Studies
    - Bicycle and Pedestrian Master Plan
    - Urban Public Transit Studies
    - Freight Movement Studies



# Transportation and Environment

## Regional and Rural Transit Planning

- County Transit Planning
  - Provide Technical Assistance to County Transit Systems
- Regional Transit Planning/Operations

## Coordinated Human Services Transit

- Approximately 120,000 Trips Annually (FY2019)
- Funding match for 5311 Public Transit



# Bicycle and Pedestrian Safety Planning

- Local Community Plans
  - Tifton, Douglas (x2), Fitzgerald, Nashville, Dasher, Adel
  - Model Bike/Pedestrian Ordinance
  - Community Health Assessment
  - Aging in Place Toolkit
  - USBR 15 Route
  - Complete Streets Best Practices and Trainings
  - South Georgia Rails with Trails Report
  - Bicycle and Pedestrian Crash Report
- Safe Routes to School Crash Reports
- Regional Bicycle and Walking Maps (Various)



# Transportation and Environment

## Transportation Investment Act (TIA)

- Citizen Review Panel Meetings

## Environmental Programs

- Improve Water Quality and Other Environmental Areas
- Regional Water Plan Seed Grant
  - Identify non-point source pollution sources
- New River Watershed 319 Grant
  - Septic, cover crops, irrigation, dog park, stormwater mapping



# Area Agency on Aging (AAA)

**Mission-** To develop, provide, coordinate, and advocate for services that assist older individuals, at-risk adults, persons with disabilities, their families and caregivers

**Vision-** To assist these individuals in Living Longer, Living Safely, and Living Well





# Area Agency on Aging (AAA)

## Aging Funding

- Department of Human Services, Division of Aging Services
- Department of Community Health



**Department of Human Services**  
STRONGER FAMILIES FOR A STRONGER GEORGIA

## Aging Programs & Services

- Information & Assistance
- Community Options Counseling
- Nursing Home Transitions / Money Follows the Person
- Care Consultation
- Caregiver / Dementia Education Programs
- Assistive Technology
- Elderly and Disabled Waiver Programs Intake
- Senior Farmers Market Nutrition Program
- Senior Hunger Coalition



**GEORGIA DEPARTMENT  
OF COMMUNITY HEALTH**

# Area Agency on Aging (AAA)

## Aging Programs & Services (Continued)

- In-Home Services (Homemaker, Personal Care, Respite)
- Elderly Legal Assistance Program
- Wellness / Health Promotion Programs
- Alzheimer's Adult Day Care
- Home Modification (Wheelchair Ramps)
- Congregate / Senior Center Meals
- Home Delivered Meals



## Aging and Disability Resource Connection

- “No Wrong Door” Toll Free Entry Point
- 1-888-73-AGING / 1-888-732-4464
- Marketing / Outreach



# Area Agency on Aging (AAA)

## Aging Advisory Council

## Advocacy

- Georgia Council on Aging (CO-AGE)
- Georgia Association of Area Agencies on Aging (G4A)
- National Association of Area Agencies on Aging (n4a)



## Area Plan Preparation

- Four year state plan with required goals



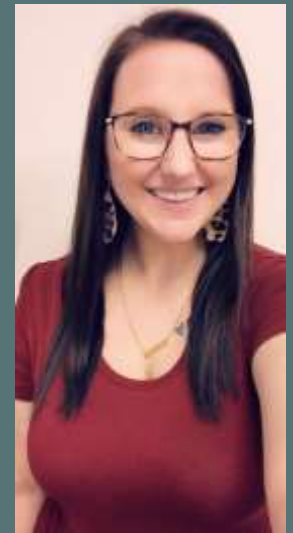
## Contract Administration

- Reports and Monitoring for 30 AAA contracts with 26 organizations

# Workforce Development

## Mission

To establish a workforce system that provides data-driven and employer-validated talent solutions through the integration of education, workforce, and economic development resources across systems.



# Workforce Development

## Workforce Innovation & Opportunity Act of 2014

“WIOA is landmark legislation that is designed to strengthen and improve our nation's public workforce system and help get Americans, including youth and those with significant barriers to employment, into high-quality jobs and careers and help employers hire and retain skilled workers.”

- U.S. Department of Labor



# Workforce Development - Funding



# Workforce Development - Funding



Program Year 2019 (July 1, 2019 – June 30, 2020)

**Adult \$1,064,962**

**Additional Funds Request \$150,000**

**Dislocated Worker \$1,204,160**

**Youth \$938,029**

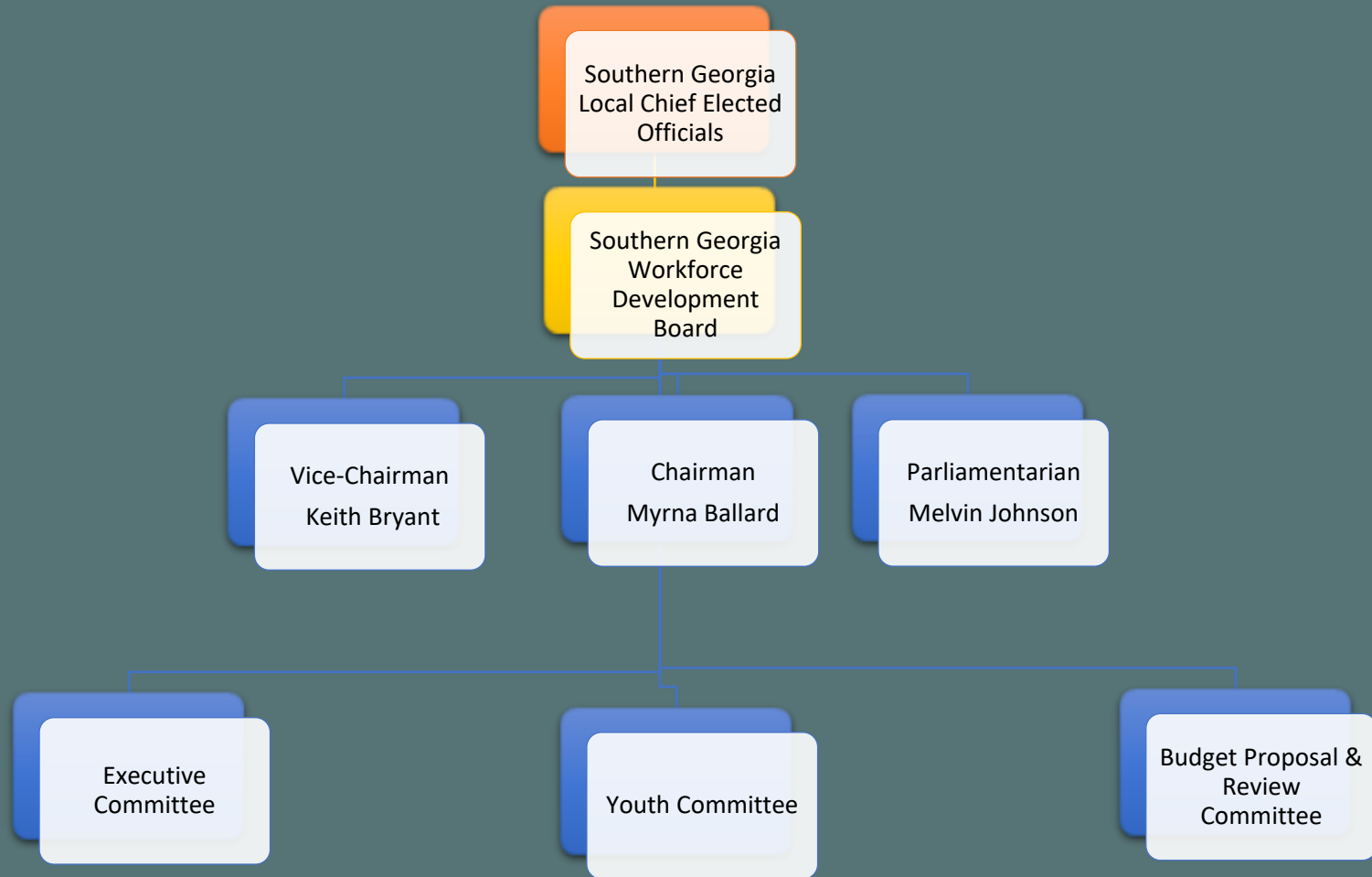
**Additional Funds Request \$150,000**

**Special Grants**

**Sector Strategy HDCI \$292,339**



# Workforce Development - Structure



# Workforce Development - Services

Individual Training Accounts (ITAs)

Out-of-School Youth GED Programs

Sector Partnership Grants - Healthcare

Adult GED Programs

On-the-Job Training

Youth Work Experience

Rapid Response

# Workforce Development – ITA's

## Individual Training Accounts (ITAs)

ITA's are the primary way for Georgia's Adults, Dislocated Workers and Youth to access WIOA funded occupational training.

- Demand Occupations
- Eligible Training Provider List (ETPL)
- Maximum \$6,000 per customer
- 2.5 year limit
- Supportive Service Payments
- Child Care Assistance
- Case Management/Career Counseling
- Job Search Assistance



# Workforce Development – GED Services

## GED Tutoring & Test Preparation

- Youth Based
- Supportive Service Payments
- Incentives
- GED Testing Fees
- Work Experience
- Case Management/Career Counseling
- Job Search Assistance



# Workforce Development – OJT

## On-the-Job Training (OJT)

**On-the-Job Training**  
**YOU HIRE, YOU TRAIN, WE PAY**



OJT Programs Let  
You Hire for Attitude  
While Training for  
Skills

**Reimbursement Rate is 50-75%  
of Employee's Wages**

On-the-Job Training contracts are funded by the Southern Georgia Workforce Development Board (SGWDB). The SGWDB/SGRC will reimburse the employer 50-75% of the employee's wages during a set training period (a minimum of 4 weeks and a maximum of 8 weeks).

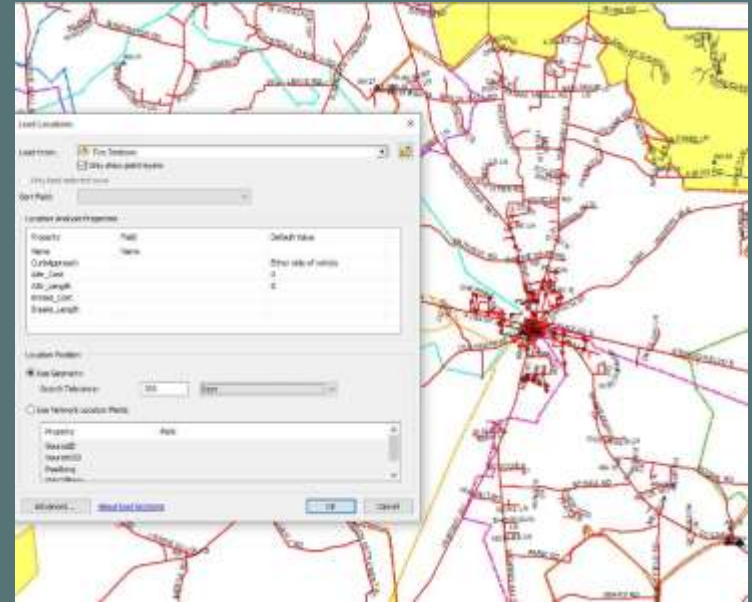
**OJT contract must be in place  
before the new employee starts!**





# Spatial Analysis

- ISO Mapping & Assistance
- Disaster Assessments
- Crime Analysis
- Parcel Value Analysis
- EMS Drive Times
- Election & School Redistricting
- Emergency Management Applications





# Mapping Solution Development

- Hard Copy Maps
- Digital Map Documents
- Mobile GIS Solutions
- Technical Support
- Web Based Data Creation & Mapping
- Low Cost GIS
- Drone Image Solutions



# Information Technology Services (ITS)

Mission - To deliver efficient and effective desktop, server and network support to local governments



# ITS – Services and Benefits

## Services

- Recommend specifications for hardware and software
- Assessments and life cycle management
- Sourcing, acquisition, installation, configuration and repair of computers, printers, wireless, firewalls, etc.
- Setup and oversight of backup and virus protection
- Coordination and liaison with 3<sup>rd</sup> party vendors

## Benefits

- State contract pricing
- Quick response with local staff
- Free Estimates
- Online service ticketing