

TRUCK TRAFFIC IN DOWNTOWN VALDOSTA

Issues, Alternative Solutions and Talking Points

Valdosta-Lowndes Metropolitan Planning Organization

Truck Traffic in Downtown Valdosta – The Issue

- Current Truck % is 7% in Downtown
 - About 1 truck every 60 seconds (avg.)
- Growth in Retail, Hotel, Professional, Dining (quality of life) – 90% occupancy
- Future Freight Level of Service (2035-2045, FHWA, FAF)
 - Rail Lines, D or F
 - Downtown roadways, D-F
 - I-75, F
- Pedestrian Safety (perceived)
- Damage to historic buildings (vibrations/crashes)
- Ambient Noise on sidewalks/inside buildings



Logistics/Distribution growth in local industrial areas

- Anticipated Growth in Port-related Traffic
 - 6-10% - 40% increase by 2040
- Through Truck Traffic with no local destination
- About 75% of Trucks go through Valdosta
- About 25% of Trucks go south of Downtown Valdosta

	West Downtown Starting Point		East Downtown Starting Point	
Destination Region	No. of Trucks	Percent of Total	No. of Trucks	Percent of Total
Through Downtown Core – exiting to the east	105	91%	0	0%
Through Downtown Core – exiting to the west	0	0%	82	74%
Through Downtown Core – exiting to the south	4	3%	24	22%
Through Downtown Core – exiting to the north	2	2%	3	3%
Destination Within Downtown Core	4	3%	2	2%
Total	115	100%	111	100%

	I-75 Starting Point		Inner Perimeter Road Starting Point	
Destination Region	No. of Trucks	Percent of Total	No. of Trucks	Percent of Total
Through Downtown Core and Entire Valdosta Region	15	42%	18	62%
Through Downtown Core – stopping south of downtown	7	19%	8	28%
Through Downtown Core – stopping north of downtown	3	8%	0	0%
Through Downtown Core – stopping east of downtown*	9	25%	0	0%
Through Downtown Core – stopping west of downtown*	1	3%	3	10%
Destination Within Downtown Core	1	3%	0	0%
Total	36	100%	29	100%

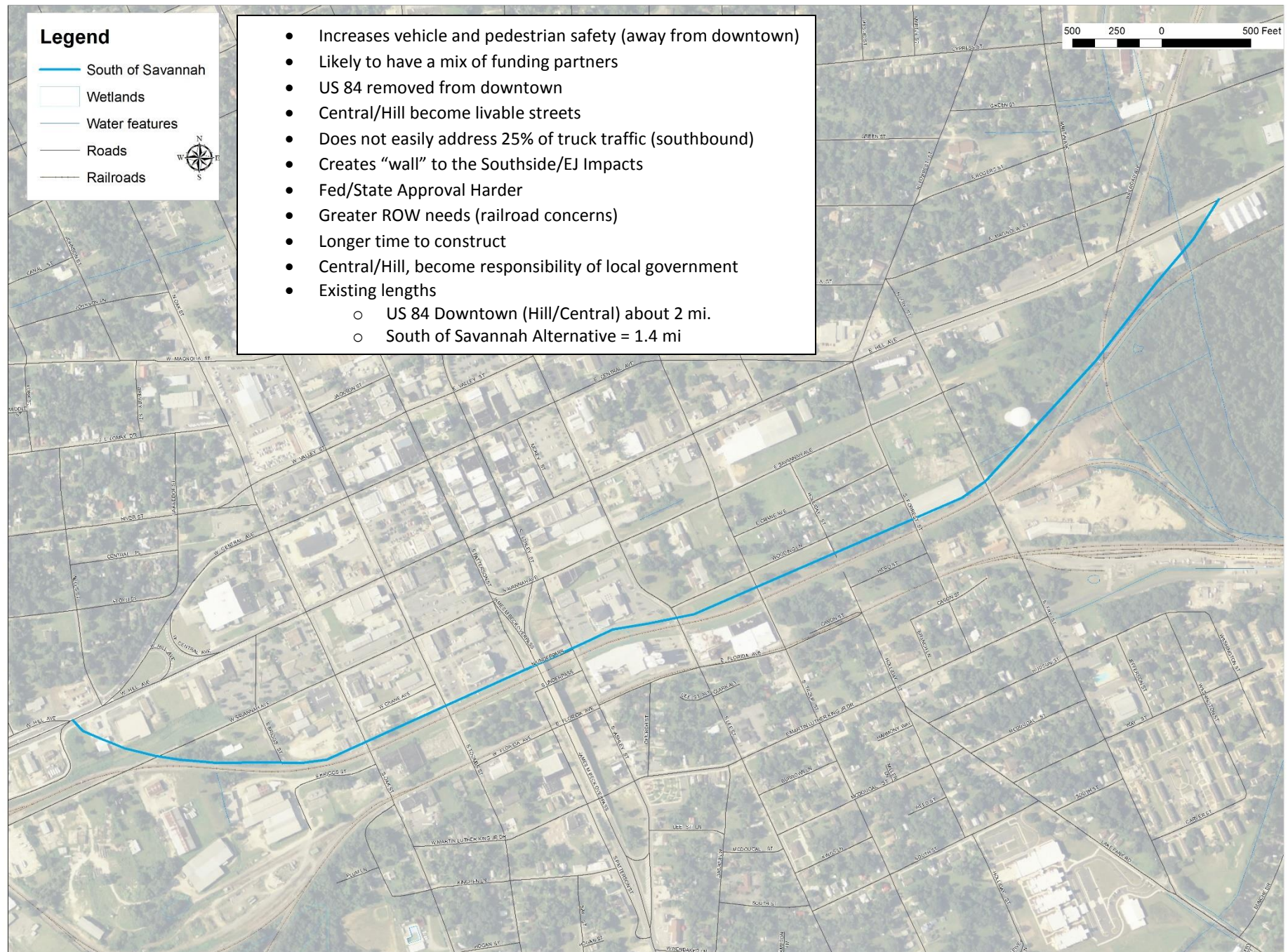
Alternatives and Talking Points

- Short-term vs. Long-term solutions
- Developing Local/state government, business support and buy-in
- Note: Western Perimeter Alternative not included, see study

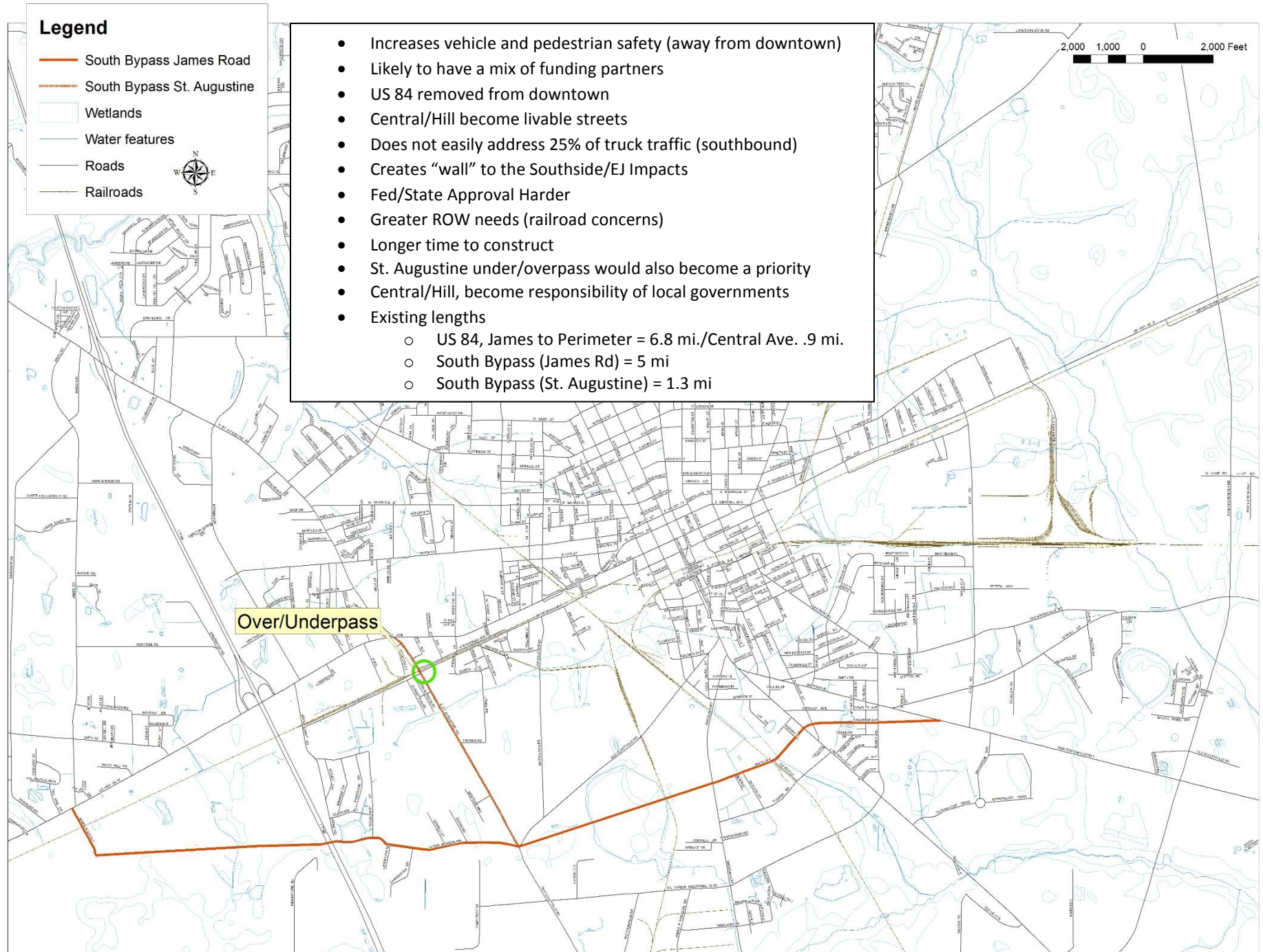
Savannah Avenue Alternative



South of Savannah Avenue Alternative



South Bypass Alternative (2 Options)



Gil Harbin South Bypass Alternative

