



# FY2013 Annual Report

VALDOSTA-LOWNDES  
METROPOLITAN PLANNING ORGANIZATION





# Valdosta-Lowndes Metropolitan Planning Organization FY2013 Annual Report

August 2013

## Table of Contents

Introduction .....	2
MPO Administration.....	4
Public Involvement.....	5
Title VI Annual Report.....	5
Limited-English Proficiency Plan .....	5
PPP Performance Measures.....	6
Transportation Systems.....	9
Transportation Plans and Studies .....	10
Project Status Report .....	13
Safety Trends .....	14
Financial Highlights.....	15
FY2013 FHWA PL and FTA 5303 Funds .....	16
FY2013 FHWA PL Funds by Quarter .....	16
FY2013 UPWP Work Element Summary Reports.....	17
VLMPO Committees .....	27

*The contents in this publication reflect the views of the author(s), who is (are) responsible for the facts and accuracy of the data presented herein. The opinions, findings, and conclusions in this publication are those of the author(s) and do not necessarily reflect those of the Department of Transportation, State of Georgia, the Federal Highway Administration, or the Federal Transit Administration. This publication does not constitute a standard, specification or regulation.*

*This document is prepared in cooperation with the Georgia Department of Transportation, the Federal Highway Administration and Federal Transit Administration.*

*VLMPO fully complies with Title VI of the Civil Rights Act of 1964 and related statutes and regulations in all programs and activities. VLMPO's website ([www.sgrc.us/transportation](http://www.sgrc.us/transportation)) may be translated into multiple languages. Publications and other public documents can be made available in alternative languages or formats, if requested.*



## Introduction

FY2013 has been a year of growth for the Valdosta-Lowndes Metropolitan Planning Organization (VLMPO). This past year has seen the expansion of our Urbanized Area and Metropolitan Planning Area into Brooks County adding new challenges to the regional transportation planning process.

Starting in FY2014 the VLMPO will begin the 18-24 month process of developing a new long range transportation plan for the region. FY2013 served as a year to complete reports, collect data and prepare for this future project. These reports and other activities are described here and are available on our website at [www.sgrc.us/transportation](http://www.sgrc.us/transportation).

This year started with the defeat of a 1% sales tax for transportation improvement in the Southern Georgia Special Transportation District. This decision by voters challenges local governments, the VLMPO and the Georgia Department of Transportation (GDOT) to fund transportation improvements in innovative ways that meet the basic mobility needs of our communities in an already tight budgetary environment.

October is recognized as National Community Planning Month by the American Planning Association. For several years the City of Valdosta has undertaken a series of events to highlight the benefits of planning in this community ranging from water resources to historic preservation to transportation planning. The VLMPO participated in various Community Planning Month activities in Valdosta,

including a tour of the Traffic Management Center, a lunch and learn on common traffic questions, and a discussion on the growth and development of Moody Air Force Base.



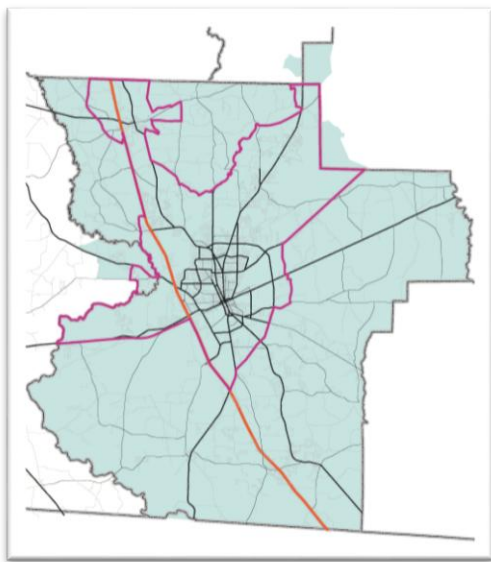
*Figure 1 Construction of US 84/W Hill Avenue Overpass*

MAP-21, the Moving Ahead for Progress in the 21<sup>st</sup> Century Act was signed into law in July 2012. This federal law brings many changes to transportation planning that the VLMPO is working to implement over the next few years. Some of the key modifications the VLMPO is working to implement include: developing performance based transportation plans and ensuring representation of public transit administrators on the Policy Committee.

After each decennial census the Census Bureau identifies new urban areas and adjusts the boundaries of existing urban areas. After the 2010 Census it was determined that the Troupeville area of Brooks County met the minimum threshold requirements to be included in the expanded Valdosta Urbanized Area. In order to fully meet the requirements of federal transportation planning laws and regulations, in June 2013, the VLMPO Policy Committee voted to expand their membership to include a

rotating member from the three smaller population counties in the Metropolitan Planning Area. The Brooks County Chairman was chosen to serve in the first rotation, followed by the Chairman from Lanier and Berrien Counties in subsequent years. This expanded membership gives all local governments a voice in transportation planning throughout the region and promotes a more comprehensive and cooperative planning process.

of the Technical Committee of the Association of Metropolitan Planning Organizations, a member of the Transportation Research Board's Metropolitan Policy, Planning and Process Committee, it's Subcommittee on Transportation in Military Communities, and the Public Participation in Transportation Planning Committee. Participation in these organizations has allowed staff to bring issues and best practices from the Valdosta region to the state and national level. Staff has been able to share information and lessons learned on the Transportation Investment Act referendum and on best practices in freight planning from this region.



*Figure 2 New Urban (purple) and Metropolitan Planning Area (shaded blue) Boundaries*

All of the members of the MPO Committees bring great insight and concern into transportation in our region and work together to resolve issues and discuss regional transportation policies and projects.

VLMPPO staff continued to participate in state and national organizations to further impact transportation planning at all levels of government serving as the Vice President of Programs for the Georgia Planning Association, a member

## MPO Administration

As noted previously, the Valdosta Urbanized Area, or UZA (urbanized is usually defined as having more than 1,000 persons per square mile) was expanded by the Census Bureau. Every ten years, MPOs 'smooth and adjust' the Census Bureau designation to follow physical features such as roads, streams, etc., to better reflect the urban growth of our communities. The 2010 Census added new areas to the Valdosta UZA that included: Hahira, Kinderlou Forest and the Troupeville area in Brooks County. The Census also indicated that urbanized areas in Berrien and Lanier Counties were no longer considered urban and have since lost this designation.

The Metropolitan Planning Area (MPA) boundary is the area for which the VLMPO develops transportation projects and policies. The MPA is intended to include areas of the community that are expected to become urbanized within 20 years. To better plan for the VLMPO region, we include all of Lowndes County and the former urbanized portions of Berrien and Lanier Counties (we expect growth and development to continue in these areas over the next 20 years, possibly becoming urbanized once again) and the greater Troupeville area in Brooks County. In total the Valdosta UZA has a population of 77,085 and a MPA population of more than 113,000.

As a result of adding Brooks County to the MPO, a memorandum of understanding (MOU) amongst all of the local governments has been revised and outlines the responsibilities of the MPO and the local governments. The

responsibilities of the VLMPO include maintaining a 20-year transportation plan, maintaining data, and providing a functional relationship between transportation planning and land use development. Responsibilities of local governments include participating in the transportation planning process and providing funding for transportation projects.



*Figure 3 Construction of Gornto Road Extension in Valdosta*

## VLMPO Best Practices Highlighted

In FY2013, the VLMPO continued to share our best practices with other MPOs and transportation professionals. VLMPO staff was invited to speak at the Transportation Research Board Annual Meeting in Washington, DC about the Transportation Investment Act Referendum and discuss the lessons learned about public engagement, project selection, and plan development.

VLMPO staff was also invited to speak in Saratoga Springs, NY at the Association of Metropolitan Planning Organizations National Conference regarding our approach to freight planning. The VLMPO shared how we have tackled freight issues through our Freight Report Series. Our small staff and limited financial resources have required the VLMPO to address pressing issues like freight transportation in new and innovative ways.

## Public Involvement

Public involvement and outreach is one of the key functions of the VLMPO. Public involvement and outreach is not only required by federal regulations, but it is up to the VLMPO to engage the public in a meaningful manner so as to provide local officials with quality feedback on the community's transportation needs.

Using our Public Participation Plan (PPP), the VLMPO engages the public through various meetings and events, through websites and social media, and through newsletters and the media.

In the past year, it was not the development of the MPOs transportation plans that has been newsworthy, but the implementation of those plans that has garnered the media and public's attention. Projects the VLMPO has been involved in this year include: the construction of US 84/W Hill Avenue Overpass, the intersection improvements at Twin St. and St. Augustine Road, the opening of Davidson Road and Tucker Bridge Road, the connection of Gornto Road and Woodrow Wilson Drive. All these projects have impacted the daily travels of thousands of Valdosta and Lowndes County residents and visitors.

### Title VI Annual Report

As required by the VLMPO Title VI Compliance Plan, included in this report is the Annual Report on Title VI activities undertaken during the past year by the VLMPO.

The VLMPO has not had any Title VI complaints and there have been no

*"Did you know? According to the U.S. Census Bureau it is estimated that more than 36,000 workers commute into#Valdosta every day!" – VLMPO via Facebook, 4/23/13*

changes to the Title VI Plan during FY2013.

The VLMPO, in partnership with the Georgia Department of Transportation (GDOT), hosted a Disadvantaged Business Enterprise (DBE) Regional Conference, for local contractors in June 2013. At this conference businesses learned how to navigate the process to bid on transportation projects through GDOT. The VLMPO also completed a DBE Policy and Procurement Procedures Policy in FY2013 to better direct VLMPO procurement activities in the future.

The VLMPO has continued to make regular updates to our mailing list, which now includes over 800 individuals and organizations.

### Limited-English Proficiency Plan

As a recipient of federal funds the VLMPO is required to evaluate the services and products we provide for use by individuals that may speak English less proficiently. Annually the VLMPO reviews data to measure this population in Lowndes County. Included in the PPP is data from the US Census Bureau 2005-2009 American Community Survey (ACS), this year data is available from the 2007-2011 ACS and is compared below. While there has been an increase in persons



who speak a language other than English we do not feel that any changes in current policy are warranted at this time.

	05-09 ACS	07-11 ACS
Estimate	5,571	6,445
Margin of Error	+/-567	+/-38
Lowndes County %	5.9%	6.5%
United States %	19.6%	20.3%

### PPP Performance Measures

When the VLMPO Public Participation Plan was adopted in 2011, included were performance measures that would be reviewed annually to evaluate how effective the VLMPO is at engaging the public. Included here are the performance measures, as well as an indication of whether this measure has increased or decreased in the last year, an indication of the effectiveness of our public engagement efforts.



Figure 4 Participants at Regional Bicycle Workshop

**Strategy 1: Raise public awareness and understanding of the transportation planning process including the functions, responsibilities and programs of the MPO and identify how interested citizens can become involved.**

- Hosted three open houses for the FY13-16 Transportation Improvement Program (TIP) and PPP amendment (hosted two for TIP and one for PPP). A total of 7 individuals attended the events. **Neutral**
- Delivered more than 2,400 quarterly newsletters. Distributed all MPO products electronically via website for easy access. **Increase**
- VLMPO Staff was the featured speaker at more than 9 events. **Decrease**
- Staff attended more than 18 events/meetings to represent the VLMPO. **Decrease**
- At least 6 media reports/features of MPO activities. **Increase**

**Strategy 2: Provide the public and others with early, ongoing and meaningful opportunities for involvement in the transportation planning process.**

- Over the past year the VLMPO has made at least daily updates to our social media websites. **Increase**
- The VLMPO updates social media websites daily and our main website several times a month. **Increase**
- The VLMPO formally responds to all comments received during a public comment period and responds to other comments throughout the year. **Neutral**
- The VLMPO staff is available to the public during regular business hours, during open houses, at other public events, and on social

media websites, where staff can respond outside of regular business hours. **Increase**

**Strategy 3: Maintain timely contact with key stakeholders and the public through the transportation planning process.**

- While the VLMPO did not hold any formal stakeholder meetings in FY2013, staff kept several groups of stakeholders informed through our newsletter, periodic emails and other communications. **Neutral**
- The VLMPO hosted 15 public committee meetings and/or open houses in FY2013. **Neutral**
- The VLMPO has developed new tools in FY2013 to allow key stakeholders more access to transportation project data through our project database. This will be an important resource as we develop the next transportation plan in the coming years. **Increase**

**Strategy 4: Identify, involve and mitigate impacts on traditionally underserved communities (those communities with high concentrations of minority, low-income, elderly or disabled populations) in the transportation planning process.**

- The VLMPO has hosted a DBE training in Valdosta for small business in FY2013, providing training on how to bid on transportation projects. **Neutral**
- The VLMPO continues to update our mailing lists to ensure all interested parties are included. **Neutral**

- The VLMPO has met regularly in the past year with representatives of minority communities to address transportation issues and concerns. **Increase**

The VLMPO has made efforts in the past year to provide timely and updated information to the public and our stakeholders through various efforts. In seven strategy areas above the VLMPO has increased our public involvement opportunities while maintaining similar involvement in six additional areas. Two areas saw a decrease from FY2012. This included speaking events and meetings staff attended. The primary reason for the decrease is because staff was not participating in as many meetings regarding the Transportation Investment Act.

The VLMPO maintains social media websites on various networks to target the most people possible. We utilize the following websites for outreach and

*“[A]re you a [#DBE](#) with legal questions? You can call the DBE supportive services team with MH Miles for some advice [#GDOT](#)” – VLMPO live Tweet during DBE Workshop, 6/27/13*

information (some more than others): Facebook, Twitter, YouTube, Instagram, Tumblr, SlideShare, Google+, and Flickr. Below are some statistics on the usage of some of our social media websites:

- 136 Likes on Facebook (26% increase)

- 142 Followers on Twitter (167% increase)
- 5 YouTube videos, 117 views (148% increase)

Our main website ([www.sgrc.us/transportation](http://www.sgrc.us/transportation)) is the primary location of all reports and information the VLMPO produces. We have seen a decrease in the average number of visits per month (down to 132, a 57% decrease) likely attributed to the Transportation Investment Act driven visits of FY2012. Mobile/tablet users now account for 12% (113% increase) of the traffic on our website, indicating how and where people are accessing the information we provide. Top searches included: 'valdosta transit' and 'valdosta mpo' or other similar keyword searches.

## Transportation Systems

The VLMPO continued to develop our award winning Freight Report Series in FY2013 with a report on Commercial Vehicle Crashes. This report focused on how 5.3% of all crashes in Lowndes County involve commercial vehicles, and some of the safety concerns around those crashes. Commercial vehicle crashes have decreased by 178% between 2003 and 2009, following a similar trend for all crashes in Lowndes County. Six new intersections were identified by this report as possible locations for future improvements based on high commercial vehicle crashes. These locations will be evaluated for inclusion in our next transportation plan to reduce crashes and improve safety.

The VLMPO is working to continue our Freight Report Series and will explore more topics in the coming years including: Trucking and the Workforce, Imports/Exports via Georgia and Florida Ports, and Local Truck Routes in Lowndes County.

Every year the VLMPO produces a crash report to examine ongoing trends in vehicle crashes in Lowndes County, and to identify new educational areas and locations for transportation improvements. The 2013 Crash Report used a new set of data for crash analysis (the Georgia Electronic Accident Reporting System) to tabulate the data. The report followed the State Highway Safety Plan even more closely than in years past. This time each one of the State goals was compared with data for Lowndes County to see how this area of the state is contributing to the statewide safety goals. Some takeaways show that

while crashes are generally decreasing in Lowndes County, in recent years, both fatalities and crashes have been on an upward trend. Drivers not using safety equipment has decreased by 168% since 2000. In the past, DUI (driving under the influence) crashes had been on a downward trend. However, from 2010-2012 DUI was the second highest contributing factor to crashes in Lowndes County.

The Annual Crash Report also identifies high crash locations that will be evaluated for inclusion in future transportation plans. Twenty-seven new locations were identified in the latest crash data.

In partnership with the other counties (Brooks, Lanier, Turner, Irwin, Ben Hill, Coffee, Ware, Brantley, and Clinch) in southern Georgia the VLMPO (through the SGRC) produced an analysis of State Bicycle Routes 10 and 20 through the region. A video tour of the routes is on our YouTube website. The accompanying report outlines improvements local governments can undertake to improve the visibility and awareness of bicycling in Southern Georgia.

In FY2013 the VLMPO hosted a Regional Bicycle Workshop in Valdosta to learn from residents what they wanted to see in bicycle infrastructure throughout the region. Speakers at the workshop included: Pat Collins with the City of Valdosta; Brent Buice with Georgia Bikes! Inc.; and Mark Whatley, a local cyclist who was injured while riding. The key outcome was people wanted more awareness and education of the bicycling resources we currently have.

## Transportation Plans and Studies

Annually the VLMPO reports on the evaluation measures included in our 2035 Transportation Plan (TP) to examine how implementation of the plan is developing.

**Priority 1: Develop a sustainable and safe regional transportation system that includes all modes for the transportation of people and goods that promote economic development.**

**1.1 Evaluate the level of service on roadways to and from activity centers, especially east-west routes.**

The level of service (LOS) of a roadway is a rather static measure of the overall transportation system. It slowly changes over time, unless there is a major capital investment that either improves or declines the LOS. Currently under construction are the US 84/W Hill Avenue Overpass and the connection of Gornto Road and Woodrow Wilson Drive. Both will have significant impacts on LOS once completed in 2014.

**1.2 Evaluate number of jobs in freight intensive industries and conduct travel time studies to evaluate wait times at at-grade crossings.**

Using data from the US Census Bureau County Business Patterns, a baseline number was developed in 2009 and continues through 2011. A full version of this table is available on our Tumblr blog.

Industry	2010	2011
Forestry/Agri.	118	124
Utilities	192	183
Construction	2,325	2,128

Manufacturing	2,791	2,942
Wholesale	1,080	1,047
Retail Trade	6,300	6,424
Transportation	2,222	2,544
<b>Total</b>	<b>15,028</b>	<b>15,392</b>

Late in FY2012 the Federal Highway Administration announced a new program to report Travel Times on all Interstates and Principal Arterial roadways throughout the nation. Once this data becomes available in the autumn of 2013, the VLMPO will compile a report on this newly available data set.

**1.3 Implementation of a coordinated public transit system in the Valdosta Urbanized Area.**

In FY2011 the VLMPO, through its consultants, completed the implementation and financing studies for a fixed-route transit system in the Valdosta Urbanized Area. At this time, however, no local funding is available to fully implement the system. The VLMPO is committed to continuing to keep this issue on the minds of local officials and is continuing to research other funding and implementation options.

**1.4 Work with local land use agencies to analyze future improvements to ensure they will accommodate planning multi-modal improvements.**

The VLMPO staff regularly works with local land use planners and other agencies to review development plans.

**1.5 Number of bike and pedestrian facilities implemented and/or interconnected.**

In FY2013, the City of Valdosta had nearly 98 miles of sidewalks, 3.2 miles of bike lanes, and 2.8 miles of multi-use trails. The City continues to expand their sidewalk network annually through road construction projects and as required for new developments. The City also has a sidewalk repair program where in FY2013 nearly 1,912 linear feet of sidewalk was repaired. Projects in Remerton and Valdosta that are currently underway will significantly expand the total amount of sidewalks and connect more of the community by the end of FY2014.

#### **1.6 Evaluate net number of jobs gained near transportation improvements.**

In FY2013, over 7,500 jobs were lost (approximately 2,800 jobs near South Georgia Medical Center appear to be under reported leading to a significantly higher number of jobs lost than in past years) near transportation projects in the 2035 Transportation Plan. This information, which is available on our website, will be used to continually evaluate projects as they are developed, and what economic development efforts are produced by these improvements. Transportation improvements can be one of many catalysts to increasing economic development in a community. It should be noted, however, that other efforts are underway that may also promote jobs and economic development.

**Priority 2: Encourage the MPO, SGRC and their member communities to cooperatively consider land use decisions by encouraging public**

**participation and involvement in the transportation planning process.**

#### **2.1 Annually evaluate public involvement effectiveness through number of persons contacted and events held.**

See the analysis of public involvement effectiveness under the Public Involvement section of this report.

#### **2.2 Produce documents for education and public information, including annual crash reports and intersection safety audits.**

The VLMPO annually produces a Crash Report that highlights crash statistics and trends in Lowndes County. This year the VLMPO also looked more specifically at commercial vehicle crashes in our Freight Report Series. The VLMPO has worked to promote transparency and public education in the transportation planning process through frequent website and social media updates.

#### **2.3 Develop criteria for implementing transportation investments.**

A project selection criterion was developed for the 2035 TP, where it is described in detail. It includes evaluating projects in five primary categories: Congestion Management, Safety and Security, Land Use, Economic and Multimodal Development, and Public Input and Community Impact.

#### **2.4 Evaluate number of public/private partnerships accomplished.**

To date there have been no locally implemented public/private partnerships in this region. GDOT has,

however, begun the process for a public/private partnership for rest areas and welcome centers throughout the state. This includes the one near Lake Park in Lowndes County on I-75.

### **2.5 Evaluate land development outside of urban service areas.**

Past efforts to evaluate any growth outside of the urban service area in Lowndes County have not yielded the results originally anticipated. Since the VLMPO will be undertaking the development of a new transportation plan in the coming years, this evaluation measure should be reevaluated.

### **2.6 Number of multi-jurisdictional or coordinated transportation improvement projects/policies**

At this time the VLMPO has not adopted a new Transportation Improvement Program to replace the FY13-16 TIP adopted last year. In FY2013, the VLMPO did allocate more funding for two multi-jurisdictional projects (Oak Street Extension Widening and Forrest Street Widening).

**Priority 3: Promote an aesthetically pleasing, sustainable transportation system that respects the needs of, and mitigates and/or enhances the impacts on disadvantaged populations and the context of the nearby built and natural environments.**

### **3.1 Evaluate context sensitive solutions implemented in transportation projects and policies.**

The VLMPO regularly works with local and state jurisdictions and project managers to ensure that transportation

projects and policies mitigate their impacts on surrounding communities and the environment. The VLMPO staff regularly speaks to community groups about transportation projects and programs to help ensure that the public is aware of the transportation planning process.

### **3.2 Report use of alternative fuels and infrastructure projects for alternative modes of transportation.**

There are currently two alternative fuel locations in Lowndes County. Flash Foods operates a station located in the 4100 block of Bemiss Road that sells E85 gasoline. In the summer of 2013, the Langdale Fuel Company partnered with Atlanta Gas Light to open a Compressed Natural Gas (CNG) fueling station on James P. Rogers Drive in Valdosta. Another Liquid Natural Gas (LNG) fueling station is also looking to build a retail location in Valdosta.

The VLMPO participated in an Alternatives Vehicles/Fuels Roadshow hosted by the City of Valdosta in FY2013. At this event, several people spoke about the development of a statewide electric vehicle charging station network, with stations to be located in Lowndes County.

### **3.3 Report on signs installed and public acceptance of new signage.**

At this time no new way-finding signs have been installed.





## Project Status Report

Below is a report of the projects included in the FY13-16 Transportation Improvement Program (TIP) that are currently being tracked by the VLMPO. The VLMPO will unveil a new TIP in early FY2014 that is anticipated to have significant updates to many of these projects.

PE= Preliminary Engineering/Design Phase

ROW= Right-of-Way Acquisition Phase

UTL= Utility Relocation Phase

CST=Construction Phase

<b>Project Description</b>	<b>PE</b>	<b>ROW</b>	<b>UTL</b>	<b>CST</b>
I-75 Phase II, Exits 22 and 29	Ongoing	2014	Beyond 2016	Beyond 2016
I-75 Exit 11	Ongoing	2014	Beyond 2016	Beyond 2016
I-75 Exit 18 Full Interchange	Beyond 2016	Beyond 2016	Beyond 2016	Beyond 2016
Jerry Jones, Gornto to Oak	Ongoing	Beyond 2016	Beyond 2016	Beyond 2016
I-75 Phase II, Exit 2	Ongoing	2015	Beyond 2016	Beyond 2016
Forrest St. Park to Bemiss	Ongoing	To be Determined	To be Determined	2016
Oak St. Ext., 5 Points to Breckenridge Drive	Ongoing	To be Determined	To be Determined	Beyond 2016
Pendleton Dr. at Roosevelt Dr.	No work on this project			
SR 125/Davidson Rd at MAFB	Project Complete			
SR 31 Bridge at FL Line	Under Construction			
St. Augustine at Twin St.	Project Complete			
US 84 Grade Separation	Under Construction			
Woodrow Wilson Extension	Under Construction			
Tucker Road Bridge	Project Complete			
I-75 Exit 18 Operational	Project Complete			



## Safety Trends

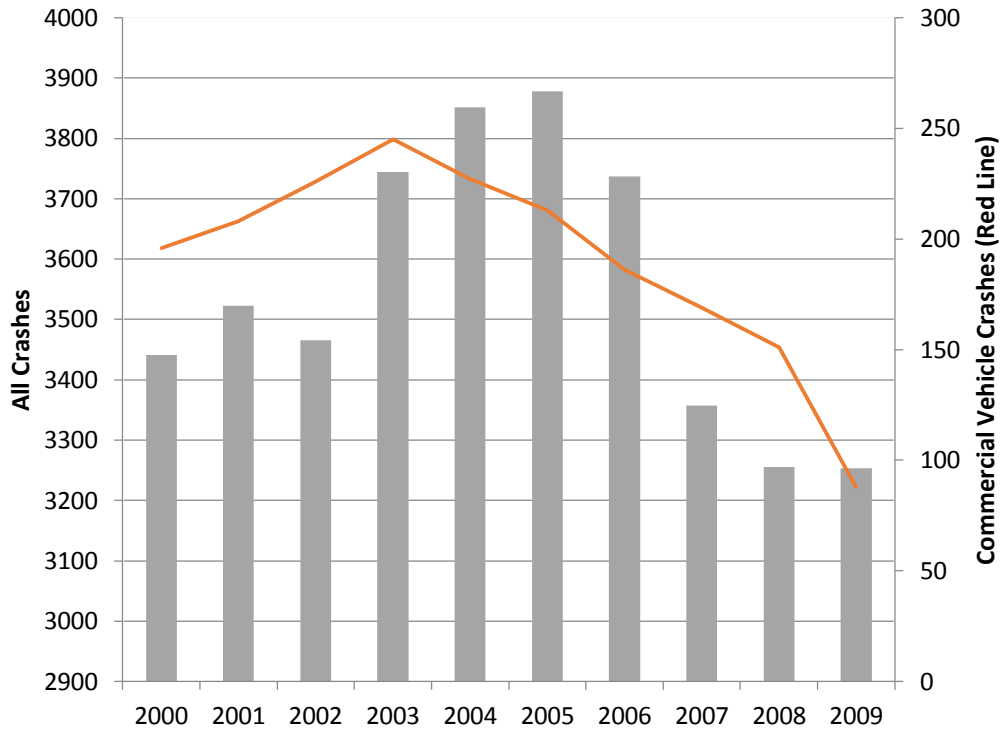


Figure 5 Commercial Vehicle Crashes vs. All Crashes; Lowndes County; 2000-2009

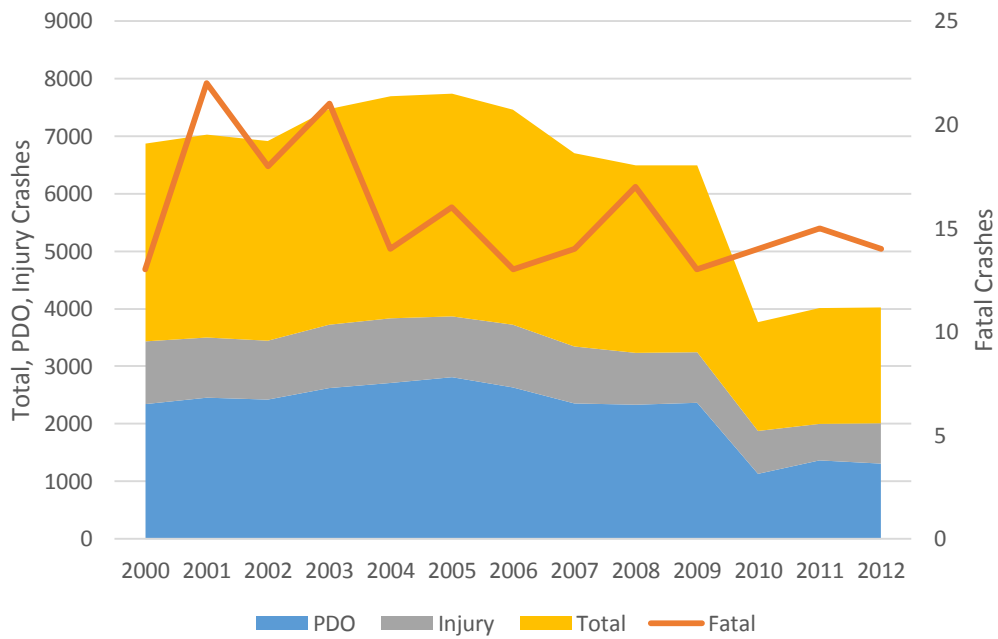
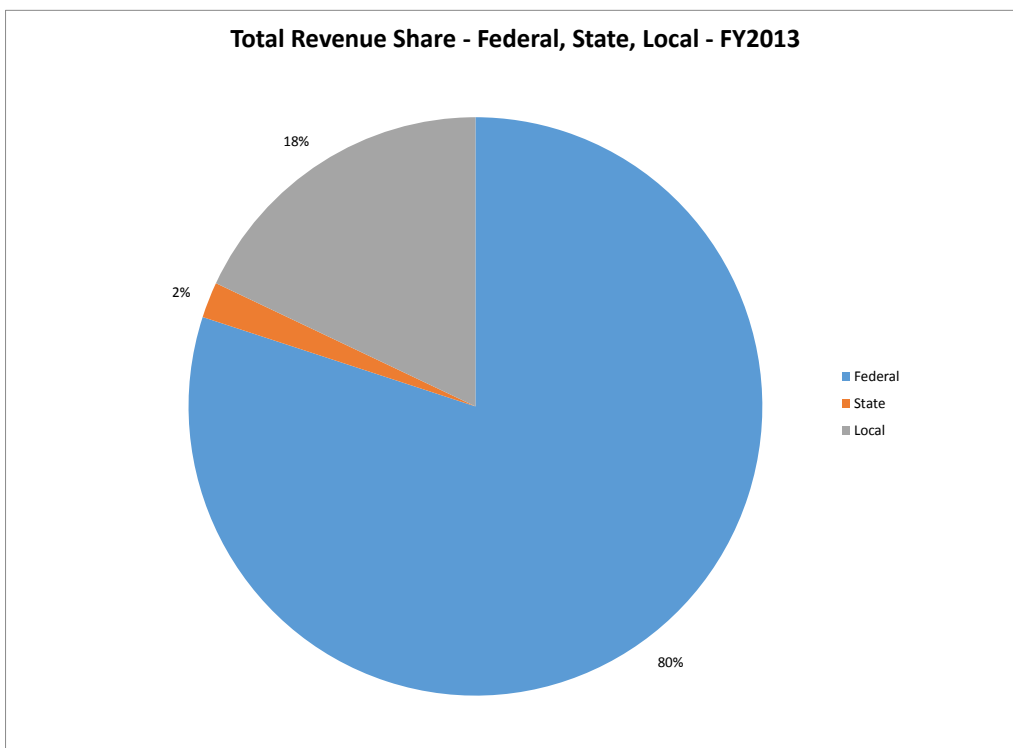
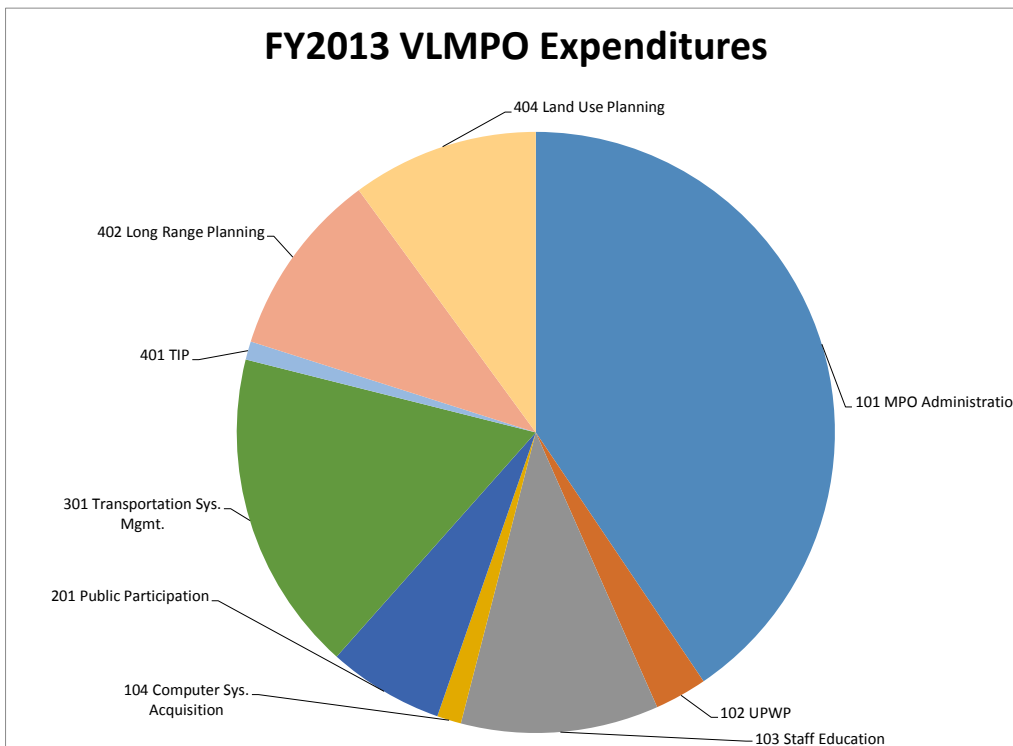


Figure 6 Crashes in Lowndes County 2000-2012. PDO=Property Damage Only

## Financial Highlights

The VLMPO expends funds through projects that are identified in the Unified Planning Work Program (UPWP). The UPWP identifies and outlines the planning activities which the MPO plans to undertake for the following year. The VLMPO received its funds through Federal and State grants and Local matching funds. Federal funds make up the majority of the revenues at 80%, with State funding at 2%, and the Local matching funds at 18%.



## FY2013 FHWA PL and FTA 5303 Funds

This chart is a breakdown of the Revenue and Expenditures of FHWA PL and FTA 5303 funds utilized by the VLMPO in FY2013.

FY2013 Revenue and Expenditures					
Work Element	Budgeted Total	Expended Total	Expended Federal	Expended State	Expended Local
101 MPO Administration	\$ 84,400.78	\$ 62,575.56	\$ 50,060.44	\$ 2,704.87	\$ 9,810.25
102 UPWP	\$ 6,442.93	\$ 4,338.52	\$ 3,470.82	\$ 97.50	\$ 770.20
103 Staff Education	\$ 24,493.19	\$ 16,492.01	\$ 13,193.61	\$ -	\$ 3,298.40
104 Computer Sys. Acquisition	\$ 2,721.47	\$ 2,017.98	\$ 1,614.38	\$ -	\$ 403.60
201 Public Participation	\$ 28,214.66	\$ 9,661.80	\$ 7,729.44	\$ 100.00	\$ 1,832.36
301 Transportation Sys. Mgmt.	\$ 111,580.10	\$ 26,707.37	\$ 21,365.90	\$ -	\$ 5,341.47
401 TIP	\$ 6,442.93	\$ 1,525.72	\$ 1,220.58	\$ 92.90	\$ 212.24
402 Long Range Planning	\$ 47,578.80	\$ 15,624.56	\$ 12,499.65	\$ 15.04	\$ 3,109.87
403.2 Transit Implementation	\$ -	\$ -	\$ -	\$ -	\$ -
404 Land Use Planning	\$ 22,771.73	\$ 15,565.25	\$ 12,452.20	\$ 99.31	\$ 3,013.74
<b>Total</b>	<b>\$ 334,646.59</b>	<b>\$ 154,508.77</b>	<b>\$ 123,607.01</b>	<b>\$ 3,109.63</b>	<b>\$ 27,792.13</b>

## FY2013 FHWA PL Funds by Quarter

This chart is a breakdown of the expenditure of FHWA PL funds by quarter utilized by the VLMPO in FY2013.

FY 2013 FHWA PL Expenditures by Quarter							
Work Element	First Quarter	Second Quarter	Third Quarter	Fourth Quarter	Total Year End	Contract Total	Contract Balance
101 MPO Administration	\$ 11,574.16	\$ 10,147.26	\$ 778.66	\$ 13,026.82	\$ 35,526.90	\$ 57,150.78	\$ 21,623.88
102 UPWP	\$ 2,616.87	\$ 792.47	\$ (24.69)	\$ (21.17)	\$ 3,363.48	\$ 5,442.93	\$ 2,079.45
103 Staff Education	\$ 7,456.89	\$ 4,633.41	\$ 3,795.66	\$ 606.05	\$ 16,492.01	\$ 24,493.19	\$ 8,001.18
104 Computer Sys. Acquisition	\$ 400.00	\$ -	\$ 1,617.98	\$ -	\$ 2,017.98	\$ 2,721.47	\$ 703.49
201 Public Participation	\$ 2,068.20	\$ 1,680.36	\$ 2,315.69	\$ 2,597.55	\$ 8,661.80	\$ 27,214.66	\$ 18,552.86
301 Transportation Sys. Mgmt.	\$ 5,130.65	\$ 3,352.30	\$ 2,581.86	\$ 15,642.56	\$ 26,707.37	\$ 111,580.10	\$ 84,872.73
401 TIP	\$ 444.99	\$ 163.27	\$ (4.16)	\$ (7.41)	\$ 596.69	\$ 5,442.93	\$ 4,846.24
402 Long Range Planning	\$ 363.82	\$ 4,027.45	\$ 10,995.30	\$ 87.53	\$ 15,474.10	\$ 16,328.80	\$ 854.70
404 Land Use Planning	\$ 2,188.60	\$ 10,943.88	\$ (95.12)	\$ 1,534.77	\$ 14,572.13	\$ 21,771.73	\$ 7,199.60
<b>Totals</b>	<b>\$ 32,244.18</b>	<b>\$ 35,740.40</b>	<b>\$ 21,961.18</b>	<b>\$ 33,466.70</b>	<b>\$ 123,412.46</b>	<b>\$ 272,146.59</b>	<b>\$ 148,734.13</b>

# FY2013 UPWP Work Element Summary Reports

## 2013-101 – MPO Administration

### Objective:

To coordinate and conduct the transportation planning activities of the Metropolitan Planning Organization (MPO) in compliance with all federal, state, and local laws, regulations and requirements.

### Project Description:

Maintain proper records as required under the PL contract, 5303 and any other contracts administered by the MPO, includes preparation of budgets, financial records, reimbursement requests and an annual performance report. Coordinate MPO Committee meetings and overall transportation planning efforts in the Region. Continue to work with GAMPO and other state and national organizations on the role of MPOs in statewide and metropolitan transportation planning. Continue to work with GDOT and surrounding jurisdictions to develop a comprehensive, coordinated and continuous regional transportation planning process. Work with other SGRC staff to ensure compliance with FTA, FHWA and other federal regulations.

### Quarter 1 Report:

Staff held meetings of the Policy, Technical and Citizens committees for the VLMPO. Staff met with officials in Brooks County to conduct an orientation on the MPO and to begin the process of adding this county to the MPO activities.

### Quarter 2 Report:

Staff prepared materials for VLMPO committee meetings in November and December. Staff met with local governments and GDOT to develop new/updated maps for the Valdosta Urbanized Area. Staff attended the annual GAMPO meeting in Augusta. Staff spoke with new representatives from GDOT Intermodal regarding new funding opportunities for development of the upcoming 2040 LRTP.

### Quarter 3 Report:

VLMPO staff prepared meeting materials for regular MPO committee meetings held in March. Staff attended GDOT Board meetings in February and March. Staff met with new Policy Committee members for orientation sessions. Staff circulated a new MOU to add Brooks County to the MPO amongst the other local jurisdictions, included travel to meet with local elected officials in these areas. It should be noted that much of the staff time on this element in this quarter was charged to the 5303 annual contract and is included here for informational purposes only.

### Quarter 4 Report:

VLMPO staff prepared meeting materials for regular MPO committee meetings held in June. Staff prepared presentation materials for a presentation on social management and public engagement given in China by our Executive Director using SGRC programs as examples. Staff attended the annual meeting of GAMPO in Atlanta. Staff attended the Community Assessment Group meetings for Lowndes County.

### Comparisons of Actual to Date performance to stated goals:

Actual to Date performance matches stated goals.

### Progress in meeting schedules:

All schedules met during this quarter.

<b>Budget</b>	<b>\$57,150.78</b>	<b>Actual to Date</b>	<b>\$35,526.90</b>	<b>Percent Expended</b>	<b>62.16%</b>
---------------	--------------------	-----------------------	--------------------	-------------------------	---------------

**Percent of Project Complete:** 100%

**Approved planning program revisions:** Yes, in September 2012 the VLMPO Policy Committee approved an amendment to add FY2012 carryover, increasing the budget to those shown above. Budget amendments were also approved in December and March, affecting 5303 funds only.

## 2013-102 – Unified Planning Work Program

### **Objective:**

Develop annual work program to guide staff in the transportation planning activities of the MPO as directed by the Policy Committee in compliance with all federal, state and local laws, regulations and requirements.

### **Project Description:**

The UPWP is an annual document that includes a brief description of tasks, work products, responsible agencies, and identifies the funding sources to accomplish planning efforts. MPO staff will draft a FY2014 UPWP by February 2013 for review by GDOT/FHWA/FTA. The Final UPWP will be reviewed by the TCC and CAC which then recommends it to the Policy Committee for adoption (by March 2013).

### **Quarter 1 Report:**

Staff prepared the FY2012 Annual Report and quarterly reports to close out the FY2012 year for the PL and 5303 funding programs. Staff prepared an amendment to the FY2013 UPWP to amend FY2012 carryover funds into the FY2013 UPWP.

### **Quarter 2 Report:**

Staff prepared the FY2013 1<sup>st</sup> Quarter Report for the PL and 5303 funding programs. Staff began preparing the FY2014 UPWP and budget.

### **Quarter 3 Report:**

Staff prepared the FY2013 2<sup>nd</sup> quarter report for the PL and 5303 funding programs. Staff continued preparing the FY2014 UPWP that was adopted at our March Policy Committee meeting.

### **Quarter 4 Report:**

Staff prepared the FY13 3<sup>rd</sup> quarter report for the PL and 5303 funding programs.

### **Comparisons of Actual to Date performance to stated goals:**

Actual to Date performance matches stated goals.

### **Progress in meeting schedules:**

All schedules met during this quarter.

<b>Budget</b>	<b>\$5,442.93</b>	<b>Actual to Date</b>	<b>\$3,363.48</b>	<b>Percent Expended</b>	<b>61.80%</b>
---------------	-------------------	-----------------------	-------------------	-------------------------	---------------

**Percent of Project Complete:** 100%

**Approved planning program revisions:** Yes, in September 2012 the VLMPO Policy Committee approved an amendment to add FY2012 carryover, increasing the budget to those shown above. Budget amendments were also approved in December and March, affecting 5303 funds only.

## 2013-103 – Staff Professional Development

### **Objective:**

Develop MPO staff knowledge of transportation planning procedures through relevant workshops, conferences, and seminars.

### **Project Description:**

To provide continued education and training for MPO staff that will enable the MPO to effectively carry out the planning process in the Greater Valdosta - Lowndes Urbanized Area. Some of the conferences the staff may attend are: Georgia or Florida Planning Conferences – 700; Georgia Transit Association Conference – 500; APA National Planning Conference – 2500; TRB Annual Meeting – 2000; GAMPO Annual Conference – 500; AMPO National Conference – 1500; GA Highway Safety Conference – 700; GA ITS Annual Conference – 500; NARC or NADO National Conference – 2000; Attendance at other meetings and events not listed here shall also be considered eligible. Other out of state travel not listed here will require advance permission from GDOT. For in state travel as requested by GDOT or FHWA for conferences or training shall not require advance permission. Consider training for software packages in cooperation with GAMPO and GDOT, as needed. MPO will continue membership in AMPO, and will consider other association memberships as needed. Provide staff with necessary training to operate software and produce data and analysis relative to the needs of the MPO.

### **Quarter 1 Report:**

Staff attended the Georgia Planning Association conference in Columbus, GA. Staff attended the Association of MPOs national meeting in Saratoga Springs, NY where we presented on the freight planning efforts of the VLMPO. Staff attended several webinars on MAP-21 implementation and the impact it has on the MPO process.

### **Quarter 2 Report:**

Staff attended several webinars in this quarter on the following topics: FHWA INVEST Tool, Performance Measures, Talking Freight, and Community Impact Assessments. Staff participated and led sessions at the Valdosta Planning Month including: a Tour of the Valdosta TMC, Traffic Talking Points, Moody AFB Land Uses, 5 Points Area Redevelopment, and a regional Planners Roundtable. Staff attended the annual GAMPO meeting in Augusta.

### **Quarter 3 Report:**

Staff attended the TRB Annual Meeting in Washington, DC in January. VLMPO staff is a member of the TRB Metropolitan Programs, Policy and Processes Committee. Staff attended the Georgia Logistics Summit in Atlanta in March. Staff attended webinars on freight planning and performance measures in March as well.

### **Quarter 4 Report:**

Staff attended the AASHTO TCAPP training and workshop in Atlanta in April, followed by the GPA Spring Conference in May. Staff attended webinars on performance measure development in May.

### **Comparisons of Actual to Date performance to stated goals:**

Actual to Date performance matches stated goals.

### **Progress in meeting schedules:**

All schedules met during this quarter.

<b>Budget</b>	<b>\$24,493.19</b>	<b>Actual to Date</b>	<b>\$16,492.01</b>	<b>Percent Expended</b>	<b>67.33%</b>
---------------	--------------------	-----------------------	--------------------	-------------------------	---------------

**Percent of Project Complete:** 100%

**Approved planning program revisions:** Yes, in September 2012 the VLMPO Policy Committee approved an amendment to add FY2012 carryover, increasing the budget to those shown above. Budget amendments were also approved in December and March, affecting 5303 funds only.



## 2013-104 – Computer System Acquisition and Technical Assistance

### **Objective:**

Acquire relevant computer systems and software and train staff as related to the transportation planning process.

### **Project Description:**

This element allows the SGRC to purchase computer systems and software for ITS and GIS activities relative to the MPO planning process. Update and/or purchase Arc GIS, Arc View, CUBE 5, CORSIM, Synchro and other transportation related software packages as needed. Consider purchasing upgrades to Cube 5 traffic modeling software in coordination with GDOT and other GAMPO members. Provide staff with necessary training to operate software and produce data and analysis relative to the needs of the MPO. Coordinate purchases of computer systems, software and training with GDOT.

### **Quarter 1 Report:**

Staff purchased annual maintenance license for ESRI GIS software.

### **Quarter 2 Report:**

Staff reviewed requirements to purchase a new computer and associated software for the SGRC transportation planning staff (items were ordered and delivered in 2<sup>nd</sup> quarter, but payment was not made until 3<sup>rd</sup> quarter).

### **Quarter 3 Report:**

Staff completed the acquisition of new computer hardware and software for basic staff activities.

### **Quarter 4 Report:**

No work was completed in this quarter.

### **Comparisons of Actual to Date performance to stated goals:**

Actual to Date performance matches stated goals.

### **Progress in meeting schedules:**

All schedules met during this quarter.

<b>Budget</b>	<b>\$2,721.47</b>	<b>Actual to Date</b>	<b>\$2,017.98</b>	<b>Percent Expended</b>	<b>74.15%</b>
---------------	-------------------	-----------------------	-------------------	-------------------------	---------------

**Percent of Project Complete:** 100%

**Approved planning program revisions:** Yes, in September 2012 the VLMPO Policy Committee approved an amendment to add FY2012 carryover, increasing the budget to those shown above. Budget amendments were also approved in December and March, affecting 5303 funds only.

## 2013-201 – Public Participation Program

### **Objective:**

To implement the Participation Plan (PP) that outlines the goals of the VLMPO and opportunities for interaction amongst units of government and the public as they relate to the planning process.

### **Project Description:**

Review and update the Public Participation Plan as appropriate. Continue to engage the Citizen’s Advisory Committee through innovative and new public involvement techniques to increase participation. Continue previous efforts of SGRC to engage the Greater Lowndes Growth Advisory Committee as a resource for community input for the MPO, SGRC, Greater Lowndes Planning Commission, Lowndes County, Valdosta, Remerton, Hahira, Dasher, and Lake Park. Continue to work on transit implementation and promotion of existing transit services through public marketing, outreach and education. Continue to maintain and update websites and documents for public consumption with the most recent and relevant data. Continue to develop visualization tools and techniques to better communicate MPO plans, programs, and public involvement. Develop, in coordination with state and local planning partners a website to allow the public to report minor infrastructure repairs to local governments, consider making this website a mobile application, reporting may be by electronic means or phone calls.

### **Quarter 1 Report:**

Staff prepared for a public comment period for the amendment to the Public Participation Plan. Staff hosted a public Open House during this comment period. At least weekly updates were made to the VLMPO/SGRC website, Facebook and Twitter accounts providing public information about various transportation topics. Staff spoke at more than 9 community meetings regarding transportation, including two radio interviews.

### **Quarter 2 Report:**

Staff spoke at various sessions hosted by the Valdosta Planning Department for Community Planning Month (see Staff Professional Development). Staff spoke at an event hosted by the Valdosta Chamber of Commerce for freight and industry representatives. Staff made regular updates to our website and social media websites.

### **Quarter 3 Report:**

Staff made at least daily updates to our various social media websites and the main VLMPO website as well. Staff met with interested citizens about various topics (primarily related to DBE participation on contracts). Staff met with a university student to be interviewed for a class project on local government and transportation infrastructure. Staff participated in a panel discussion with other local officials for a local youth leadership organization.

### **Quarter 4 Report:**

Staff continued to make daily/weekly updates to social media websites and our own website. The VLMPO hosted the GDOT DBE Regional Conference in June. The VLMPO hosted a regional Bicycle Workshop in June. Staff attended an Alternative Fuels event in Valdosta.

### **Comparisons of Actual to Date performance to stated goals:**

Actual to Date performance matches stated goals.

### **Progress in meeting schedules:**

All schedules met during this quarter.

<b>Budget</b>	<b>\$27,214.66</b>	<b>Actual to Date</b>	<b>\$8,661.80</b>	<b>Percent Expended</b>	<b>31.83%</b>
---------------	--------------------	-----------------------	-------------------	-------------------------	---------------

**Percent of Project Complete:** 100%

**Approved planning program revisions:** Yes, in September 2012 the VLMPO Policy Committee approved an amendment to add FY2012 carryover, increasing the budget to those shown above. Budget amendments were also approved in December and March, affecting 5303 funds only.

## 2013-301 – Transportation Systems Management

### **Objective:**

Promote the safety, security, preservation, maintenance, and operations of the existing transportation system through the integration and connectivity of modes, for people and freight. Provide data for local and state officials to implement programs to improve the overall safety and efficiency of the transportation system.

### **Project Description:**

Incorporate traffic and access management and other strategies to improve system efficiency into MPO plans. Consider the development of an Intelligent Transportation Systems (ITS) plan for Valdosta UZA. Continue to integrate freight and goods movement into long range and short range planning efforts and update previous freight planning efforts. Continue to work with local and regional transit providers in developing Coordinated Transit Plans. Work with local communities to develop and pursue funding for alternative transportation methods and facilities and safety education, through TE, SRTS, GATEway, and other state and federal programs. Continue to actively participate in the Valdosta Chamber's Gateway Planning Committee. Develop GIS layers and other data resources (which may be web based) to be used by local and state planning partners for asset management, land use planning, transportation planning as needed. Continue to develop a website to display TIP and LRTP projects data. Continue to develop annual crash report and crash data to identify potential safety projects. Conduct special transportation studies (ex. traffic studies, concept reports, etc.) as requested by local planning partners, which may include the solicitation of consultants.

### **Quarter 1 Report:**

Staff prepared and updated various transportation data layers in GIS. Staff prepared the 3<sup>rd</sup> Freight Report on Commercial Vehicle Crashes in Lowndes County.

### **Quarter 2 Report:**

Staff prepared and updated several GIS layers in anticipation of the next LRTP update coming in FY14 and FY15. Staff prepared maps for the new urbanized area and for the Metropolitan Planning Area. Staff met with SGRC Information Technology Services Department to develop a new transportation project tracking tool/database. This tool is anticipated to be available for staff use in the 3<sup>rd</sup> quarter.

### **Quarter 3 Report:**

Staff continued to develop a project management database and interface tool to track LRTP and TIP projects in the region. This new tool will also have a web interface that will allow some of the project information to be posted to GIS websites for public information. Staff continued to develop GIS maps for various purposes. Staff attended the Georgia Logistics Summit in March.

### **Quarter 4 Report:**

Staff completed the development of a project management database to track LRTP and TIP projects in the region. The VLMPO hosted a regional bicycle workshop in June. Staff attended Talking Freight webinars.

### **Comparisons of Actual to Date performance to stated goals:**

Actual to Date performance matches stated goals.

### **Progress in meeting schedules:**

All schedules met during this quarter.

<b>Budget</b>	<b>\$111,580.10</b>	<b>Actual to Date</b>	<b>\$26,707.37</b>	<b>Percent Expended</b>	<b>23.94%</b>
---------------	---------------------	-----------------------	--------------------	-------------------------	---------------

**Percent of Project Complete:** 100%

**Approved planning program revisions:** Yes, in September 2012 the VLMPO Policy Committee approved an amendment to add FY2012 carryover, increasing the budget to those shown above. Budget amendments were also approved in December and March, affecting 5303 funds only.

## 2013-401 – Transportation Improvement Program

### **Objective:**

Develop and maintain a fiscally constrained Transportation Improvement Program in cooperation with local and state planning partners.

### **Project Description:**

VLMPO will continue to work with GDOT and local planning partners in prioritizing and implementing projects in the TIP, this includes attending meetings and conducting analysis where needed to select and prioritize projects. Assist GDOT and local public agencies in developing projects in the TIP throughout the year, including generating draft concept reports, processing TIP amendments and attending meetings with GDOT and local governments regarding projects in the TIP. Continue to develop a project tracking tool to provide Policy and Technical Committee representative's information about project development and timelines. Provide technical support for projects within the TIP and LRTP. Continue to develop a project database that is compatible with GIS and web interfaces. Continue to work with the City of Valdosta in the prioritization and implementation of projects, plans and policies identified in the City of Valdosta Transportation Master Plan.

### **Quarter 1 Report:**

Staff attended the quarterly district project update meeting in Tifton. Staff attended a meeting on the construction of the overpass on US 84 in Valdosta regarding public notification of the project.

### **Quarter 2 Report:**

Staff attended the quarterly district project update meeting in Tifton. Staff attended a meeting on the construction of the overpass on US 84 in Valdosta regarding public notification of the project. Staff prepared news releases and other releases related to the US 84 and other construction projects around Valdosta and Lowndes County.

### **Quarter 3 Report:**

Staff hosted a meeting with GDOT and local officials to discuss a proposed TIP amendment. Staff held a public comment period for the TIP amendment and presented it to the MPO committees for review and approval at the March meetings.

### **Quarter 4 Report:**

Staff prepared an administrative amendment to the FY13-16 TIP.

### **Comparisons of Actual to Date performance to stated goals:**

Actual to Date performance matches stated goals.

### **Progress in meeting schedules:**

All schedules met during this quarter.

<b>Budget</b>	<b>\$5,442.93</b>	<b>Actual to Date</b>	<b>\$596.69</b>	<b>Percent Expended</b>	<b>10.96%</b>
---------------	-------------------	-----------------------	-----------------	-------------------------	---------------

**Percent of Project Complete:** 100%

**Approved planning program revisions:** Yes, in September 2012 the VLMPO Policy Committee approved an amendment to add FY2012 carryover, increasing the budget to those shown above. Budget amendments were also approved in December and March, affecting 5303 funds only.

## 2013-402 – Long Range Transportation Plan

### **Objective:**

Develop and maintain a 20-year horizon fiscally responsible long range transportation plan. Develop data for ongoing long range planning efforts.

### **Project Description:**

Work with USDOT, GDOT and possibly FDOT when new census socio-economic information is released or needed in the development/modification of the Travel Demand Model (TDM) when needed. Provide technical support for projects within the TIP and LRTP. Continue to work with the US Census Bureau to ensure proper implementation and review of Census 2010 data locally including block, block group, tract, CTPP products, and TAZ revisions. Consider developing/refining TAZs for counties into which the Urban Area may be expanding into based on 2010 Census data and the growth of the Valdosta Metropolitan Area into areas including but not limited to Brooks, Cook, Berrien, and Lanier Counties in Georgia and Hamilton and Madison Counties in Florida. Develop GIS layers and models needed for development of land use patterns for travel demand model. Consider partnering with Lowndes County, Valdosta, Hahira, Lake Park, Dasher, and Remerton to cooperatively develop a Comprehensive Plan and Transportation Plan. Work with various stakeholders to continue to participate in the completion of a land use study for Moody Air Force Base and the surrounding areas. Includes the development of a TDF Model, data gathering, socio-economic data preparation, and improvement recommendations to be included in future TIPs and LRTPs. This project will be funded by the Department of Defense. Continue to work with GDOT and local partners in prioritizing and implementing projects in the LRTP, this includes attending meetings and conducting analysis where needed for a comprehensive, coordinated and continuous regional 2035 Transportation Plan.

### **Quarter 1 Report:**

Staff attended several webinars on MAP-21 implementation and the impact it has on the MPO process.

### **Quarter 2 Report:**

SGRC staff met with GDOT staff to discuss TAZ development for the 2040 LRTP. Staff prepared maps to update the urbanized area boundaries. Staff began a review of the 2030 and 2035 TPs, to measure their implementation and effectiveness using the FHWA INVEST Tool. The report on these two documents is anticipated to be available by the end of the 3<sup>rd</sup> quarter.

### **Quarter 3 Report:**

Staff prepared new maps of an expanded MPO Planning Area Boundary to include newly urbanized portions of Brooks County for review and adoption by the MPO committees. Staff prepared new TAZ maps for the 2040 LRTP update. Under a 5303 FTA contract staff began to prepare an RFP for socioeconomic data forecasts that will be used in the 2040 LRTP and local comprehensive plan. Staff developed two 'reports of accomplishments' for the 2030 and 2035 Transportation Plans using the FHWA INVEST tool as a basis. These documents will be available for review during the development of the upcoming 2040 LRTP. Staff met with FHWA planners to review the 2035 TP INVEST tool analysis and develop strategies for best practices in the 2040 LRTP.

### **Quarter 4 Report:**

Utilizing 5303 funds, the VLMPO solicited bids and selected a consultant to prepare socioeconomic data for the 2040 LRTP. Staff attended the AASHTO TCAPP training in Atlanta to learn how to use this SHRP 2 tool to better implement the 2040 LRTP.

### **Comparisons of Actual to Date performance to stated goals:**

Actual to Date performance matches stated goals.

### **Progress in meeting schedules:**

All schedules met during this quarter.

<b>Budget</b>	<b>\$16,328.80</b>	<b>Actual to Date</b>	<b>\$15,474.10</b>	<b>Percent Expended</b>	<b>94.77%</b>
---------------	--------------------	-----------------------	--------------------	-------------------------	---------------

**Percent of Project Complete:** 100%

**Approved planning program revisions:** Yes, in September 2012 the VLMPO Policy Committee approved an amendment to add FY2012 carryover, increasing the budget to those shown above. Budget amendments were also approved in December and March, affecting 5303 funds only.

2013-403 – Special Transportation Studies

**Objective:**

To conduct a planning level analysis of alternatives to resolves issues with truck traffic in downtown Valdosta.

**Project Description:**

No work is planned in this work element this year; it is left blank for future use.

**Quarter 1 Report:**

No work has been completed at this time.

**Quarter 2 Report:**

No work has been completed at this time.

**Quarter 3 Report:**

No work has been completed at this time.

**Quarter 4 Report:**

No work has been completed at this time.

**Comparisons of Actual to Date performance to stated goals:**

Actual to Date performance matches stated goals.

**Progress in meeting schedules:**

All schedules met during this quarter.

<b>Budget</b>	<b>\$0</b>	<b>Actual to Date</b>	<b>\$0</b>	<b>Percent Expended</b>	<b>0%</b>
---------------	------------	-----------------------	------------	-------------------------	-----------

**Percent of Project Complete:** 100%

**Approved planning program revisions:** Yes, in September 2012 the VLMPO Policy Committee approved an amendment to add FY2012 carryover, increasing the budget to those shown above. Budget amendments were also approved in December and March, affecting 5303 funds only.

## 2013-404 – Land Use Planning

### **Objective:**

Development and review of local transportation plans and comprehensive plan elements and review/development of traffic impact analyses that are associated with land-use and zoning and directly affect or are affected by transportation plans of the MPO.

### **Project Description:**

Coordinate with local planning staff to review local land-use developments (e.g. zoning requests, subdivision plats, and commercial development) and affects to the transportation infrastructure. Review plans' compatibility with transportation plans. Continue previous efforts of SGRC to engage the Greater Lowndes Growth Advisory Committee as a resource for community input for the MPO, SGRC, Greater Lowndes Planning Commission, Lowndes County, Valdosta, Remerton, Hahira, Dasher, and Lake Park. Provide technical assistance to local land use planners and engineers on planning topics related to the integration of transportation and land use, including: access management, transit oriented development, etc. Consider hosting a workshop on Complete Streets for local officials and business leaders. Continue to work with GDOT, FHWA and surrounding jurisdictions to continue to develop a comprehensive, coordinated and continuous regional transportation plan.

### **Quarter 1 Report:**

Staff began work on a follow-up to the Joint Land Use Study completed in FY12 with Moody AFB. The follow-up work includes using an expanded VLMPO Travel Demand Model to show how development policy changes can impact transportation infrastructure as this part of the region continues to grow.

### **Quarter 2 Report:**

Staff continued work on a follow-up to the Joint Land Use Study completed in FY12 with Moody AFB. The follow-up work includes using an expanded VLMPO Travel Demand Model to show how development policy changes can impact transportation infrastructure as this part of the region continues to grow.

### **Quarter 3 Report:**

Staff continues to receive weekly reports from local governments on land use zoning and development cases and reviews them for applicability to the regional transportation system.

### **Quarter 4 Report:**

Staff continues to receive weekly reports from local governments on land use zoning and development cases (including two major subdivision cases) and reviews them for applicability to the regional transportation system.

### **Comparisons of Actual to Date performance to stated goals:**

Actual to Date performance matches stated goals.

### **Progress in meeting schedules:**

All schedules met during this quarter.

<b>Budget</b>	<b>\$21,771.73</b>	<b>Actual to Date</b>	<b>\$14,572.13</b>	<b>Percent Expended</b>	<b>66.93%</b>
---------------	--------------------	-----------------------	--------------------	-------------------------	---------------

**Percent of Project Complete:** 100%

**Approved planning program revisions:** Yes, in September 2012 the VLMPO Policy Committee approved an amendment to add FY2012 carryover, increasing the budget to those shown above. Budget amendments were also approved in December and March, affecting 5303 funds only.

## VLMPO Committees

<b>Policy Committee</b>	
<b>Name</b>	<b>Agency</b>
John Leonard	Southern Georgia RC
Joe Pritchard	Lowndes County
Larry Hanson	City of Valdosta
John Gayle	City of Valdosta
Bill Slaughter	Lowndes County
Keith Golden	GDOT
G. R. Holton	City of Dasher
S. L. Jones	Brooks County
Rodney Barry	FHWA-GA
Yvette Taylor	FTA Region IV
Angela Crance	Citizen's Advisory Comm.

<b>Technical Coordinating Committee</b>	
<b>Name</b>	<b>Agency</b>
Patrick Collins	City of Valdosta
Mike Fletcher	Lowndes County
Lesa Walker	GDOT Planning
Brent Thomas	GDOT District 4
Roger Christie	Lowndes Co. Schools
Edward Collins	Valdosta City Schools
Mike Meeks	Bike/Ped Advocate
Ann-Marie Day	FHWA-GA
Danny Weeks	Lowndes Co. EMA

<b>Citizen's Advisory Committee</b>	
<b>Name</b>	<b>Agency</b>
	Lowndes County
Bryan Almand	City of Valdosta
Kenneth Sherrill	City of Lake Park
Leggett Lovan	VL Chamber
	Lowndes Co. BoE
Stephanie Joachim	Valdosta City BoE
Ray Sable	Valdosta State Univ.
Angela Crance	Valdosta Tech. Coll.
	City of Valdosta
Edward Rawls	Lowndes County
	Lowndes County
Harriet Crum	City of Hahira
Debbie Hobdy	Lowndes County
	City of Dasher
Carroll Griffin	City of Remerton
Tim Riddle	Convention Center
Amanda Peacock	Cntrl. Val. Dev. Auth.
Allan Ricketts	VL Industrial Auth.
Col. Clarence Parker	VL Airport Auth.
Steven Barnes	Leadership Lowndes
	City of Valdosta
Dr. Richard Saeger	City of Valdosta
Charlie Clark	Lowndes County



